

INSPIRE • IMPROVE • INNOVATE
COMMUNITYCHOICE
HEALTH and EDUCATION INSTITUTE

Community Health Planning Meetings

County Health Coalitions

*Planning Process Timeframe
June – December 2014*

Jesus Hernandez, MPA

1

State Health Care Innovation Planning

Today's Objectives →

- **Context Setting and Background** of State Health Care Innovation Plan.
- **“Big Picture” overview** of how the State Health Care Innovation Plan is seeking to drive health systems transformation in Washington
- **Overview of the aims and major proposed innovations** of the Innovation Plan
- **Next Steps: Community of Health planning coalitions at the county level and regional aspects.**

2

Terminology:

SIM

The **State Innovation Models** initiative is a national effort and grant program of the Center for Medicare and Medicaid Innovation (CMMI) to identify and spread health practices that result in **better health and better care at lower costs**.

SHCIP

Washington State was one of three states awarded a nearly **\$1 million model pre-testing grant** to fund collaborative development of a five-year plan for health innovation. Other states have received "model design" grants, and are engaged in similar work. The effort is called: **State Health Care Innovation Planning**

Triple Aim

The Institute for Healthcare Improvement (IHI) believes that focusing on three critical objectives simultaneously can potentially lead us to better models for providing healthcare.

1. **Better Health: Improve the health of the defined population.**
2. **Better Care: Enhance the patient care experience (including quality, access and reliability).**
3. **Lower Cost: Reduce, or at least control, the per capita cost of care.**

3

Big System Moving Parts



4

SIM Grant and ACH Opportunity

SIM Grant Timeline: Project period Jan. 2015-Dec. 2018

- State SIM Application for \$100 million
- Application went in on July 21, 2014
- Award Notification: October 31, 2014 (tentative)

ACH Opportunity for Regions

- Two anticipated ACH pilots for most “ready” regions
 - Facilitate multi-sector engagement to achieve healthy communities & promote whole person health
 - Facilitate transformative change in healthcare

5

CURRENT SYSTEM...has challenges

- **Focus on emergent symptoms**,
not early mitigation of disease & optimum long-term outcomes
- **Fee-for-Service** supports the inefficient system and pays for the wrong things.
- **Disparate pockets of Innovation** that we don't facilitate learning and best practice sharing across the state.
- **Too much focus on the 10%**, not enough on the other determinants

6

Three Core Strategies

Supported by HB 2572 & SB6312

- **Build healthy communities and people** through prevention and early mitigation of disease throughout the life course.
- **Drive value-based purchasing** by rewarding quality health care over quantity, with state government leading by example as Washington's largest purchaser of health care "First Mover".
- **Improve chronic illness care** through better integration of care and social supports, particularly for individuals with physical and behavioral health co-morbidities .

7

HB 2572 & SB6312

- **HB 2572: Authorized and financed** initiation of foundational Innovation Plan building blocks including:
 - Regional mobilization,
 - Clinical-community linkages and practice transformation,
 - Improved data collection architecture for performance and transparency metrics, and
 - Integrated Medicaid managed care procurement tied to enhanced performance metrics.
- **SB 6312: Mandated** integrated physical and behavioral health purchasing options for Medicaid coverage beginning in 2016, with fully integrated physical and behavioral health purchasing expected by 2020.

8

Seven Building Blocks In the SHCIP

- Quality and price transparency
- Person and family engagement
- Regionalize transformation
- Accountable Communities of Health (ACHs)
- Leverage and align state data
- Practice transformation support
- Workforce capacity and flexibility

9

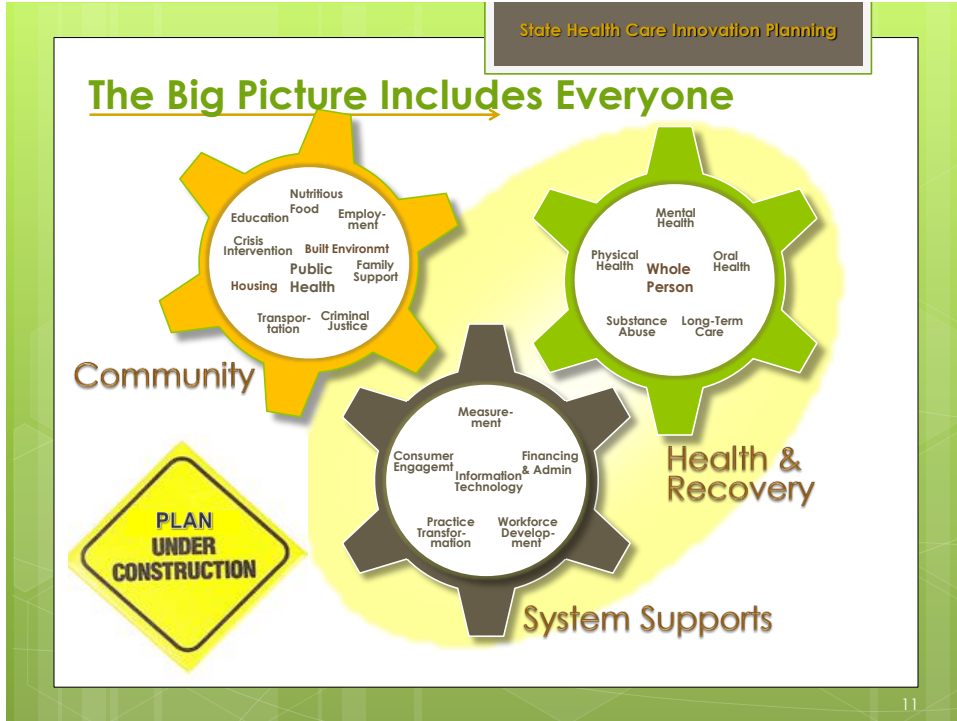
Washington State as “First Mover”

Lead through Active Purchasing role:

- Shift away from traditional fee for service to outcomes based payment and care delivery and building on and strengthening linkages to communities and public health.
 - Set core priority outcomes and measure
 - Align public and private purchasers
 - Leverage procurements

Convene and Partner: Assure needed infrastructure supports and accountability are in place to assist, drive and sustain health and healthcare transformation

10



State Health Care Innovation Planning

Questions?

Nothing is impossible,
the word itself says
'I'm possible'!

- Audrey Hepburn

12