

North Central Washington Behavioral Health (NCWBH)



**COURTNEY WARD, MPA
FISCAL/CONTRACTS MANAGER**

Overview



- **NCWBH Structure**
- **Rate Setting Methodology**
- **Funding**
- **Contractors**
 - **Contracted Services**
- **Future Funding under a Managed Care Organization**

NCWBH



HISTORY AND ORG STRUCTURE

NCWBH - History



- Transformation from RSN to BHO
 - SB6312
- Re-established regional service areas across the State
 - Reduced RSN from 11 to 9
 - Established 1 “early-adopter” in SW WA
- Added Substance Use Disorder Services
 - Previously managed by Division of Behavioral Health and Recovery on a Fee for Service payment

NCWBH is a PIHP



- Prepaid inpatient health plan (PIHP) means an entity that -
 - (1) Provides services to enrollees under contract with the State, and on the basis of capitation payments, or other payment arrangements that do not use State plan payment rates.
 - (2) Provides, arranges for, or otherwise has responsibility for the provision of any inpatient hospital or institutional services for its enrollees; and
 - (3) Does not have a comprehensive risk contract.

NCWBH – Structure and Stakeholders

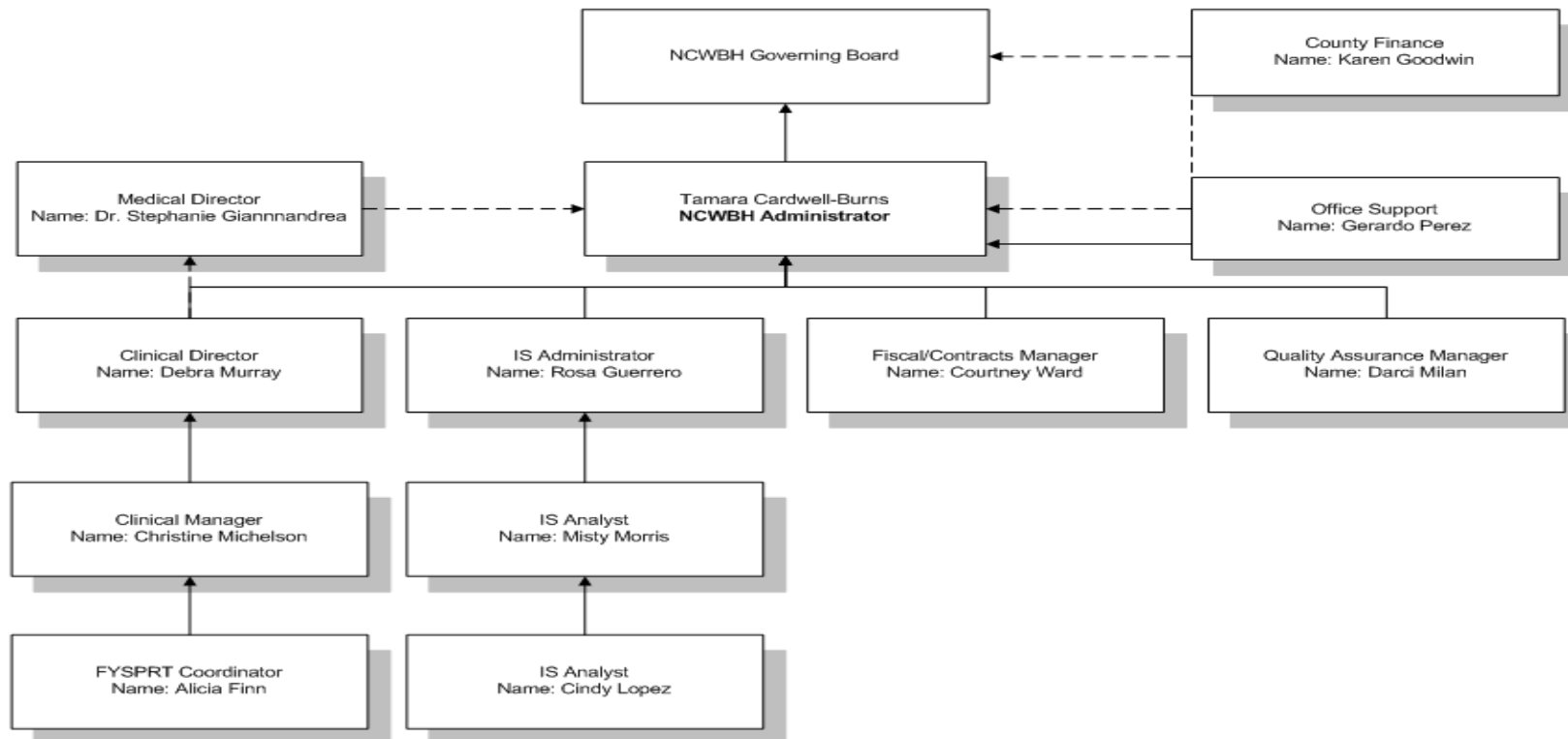


- **Governing Board**
 - One (1) Board member from each county; serve as the authoritative body for NCWBH
- **Advisory Board**
- **Quality Management Oversight Committee**
- **Quality Review Team**
- **Stakeholders**
- **NCWBH Internal Committees:**
 - Information Services Quality Review Team
 - Management Team
 - Clinical Team

NCWBH – Structure and Stakeholders



North Central Washington BHO/PIHP Organizational Chart



NCWBH Rates



RATE SETTING METHODOLOGY

Rate Setting Process



- The U.S. Centers for Medicare and Medicaid Services (CMS) mandates that rates paid to Medicaid-funded MC plans must be based on *actual cost experience* and be certified as *actuarially sound*
- Rate changes are implemented at the start of, and effective for the remainder of each Calendar Year (CY)
- DBHR contracts with Mercer Global for rate setting methodology
 - HCA contracts with Milliman, Inc.

Rate Setting Process



- Key Points for Mercer
 - Must use three consecutive years of encounter and inpatient claim data – Rebase Year **ONLY**
 - Encounter data is used as the primary source for rate setting methodology
 - Secondary sources are also cross-references for rate setting methodology
 - ✦ R & E reports
 - ✦ Wage Data from Bureau of Labor Statistics
 - ✦ Salary surveys
 - ✦ Outpatient per diem data

Rate Setting Process



- **Five Legacy Cells for Rate Structure**
 - Disabled Children
 - Non-Disabled Children
 - Disabled Adult
 - Non-Disabled Adult
 - Newly Eligible
- **Current Rates**
 - Because Grant County had a lower PMPM compared to Chelan/Douglas Counties for implementing MH services, the difference (-28%) was used to establish current rates.

Funding



NCWBH FINANCIAL PORTFOLIO

NCWBH - Funding



- Primary funding is Medicaid
- Secondary State General Fund
- Tertiary ; Federal Block Grants, Federal Grant dollars and Proviso dollars
 - Funding covers a tri-county regional services area which includes:
 - ✦ Grant County
 - ✦ Douglas County
 - ✦ Chelan County

Medicaid Funding



- June Eligible Count 69,767
 - Highest eligible counts are Non-Disabled Children and Newly Eligibles (Childless Adults/Medicaid Expansion)
- Projected 2016/17 Funding **\$22,113,584**
 - 12 Month Projection
- Funding is used for:
 - BHO Administrative Costs
 - IS Costs
 - Agency and Provider Payments
 - Inpatient Bed Costs

State Funding



- 12 Month Funding **\$3,793,944**
 - Dedicated Marijuana Account (DMA) **\$86,964**
 - Criminal Justice Treatment Account (CJTA) **\$209,628**
 - Jail Services **\$68,028**
 - Program for Assertive Community Treatment (PACT) **\$173,748**
 - Detention Decision Review **\$2,148**
 - Assisted Outpatient Treatment **\$19,512**
 - 5480 – ITA Non Medicaid **\$536,436**
- Most of these dollars **would not** be administered by an MCO

Block Grant/Federal Funding



- Projects for Assistance in Transition from Homelessness (PATH)
 - \$23,514 (04/01/2016-09/30/2016)
- Permanent Options for Recovery Centered Housing (PORCH)
 - \$80,000 (04/01/2016-09/30/2016)
- Becoming Employed Starts Today (BEST)
 - \$144,677 (04/01/2016-09/30/2016)
- Substance Abuse Block Grant (SABG)
 - \$567,344 (15 mo)
- Mental Health Block Grant (MHBG)
 - \$244,034 (15 mo)
- Family Youth and Systems Partner Round Table (FYSPRT)
 - \$93,750 (15 mo)
- Most of these dollars **would not** be administered by an MCO

Services Provided



CONTRACTED PROVIDERS

NCWBH - Partners



- **Contracted Partners**

- **Mental Health Providers:**

- ✦ Catholic Family and Child Services (CFCS); Capitated funding
 - ✦ Children's Home Society (CHS); Capitated funding
 - ✦ Columbia Valley Community Health (CVCH); Fee-For-Service (FFS)
 - ✦ Grant Integrated Services (GIS); Capitated Funding

- **Substance Use Disorder Providers:**

- ✦ The Center for Alcohol and Drug Treatment (The Center); Capitated
 - ✦ Grant Integrated Services – Prevention and Recovery Center (PARC)
 - ✦ Ten (10) Out of County SUD Residential Providers; Per Diem

Contracted Services - Crisis



- Available to all regardless of funding/ability to pay
 - Primarily State Funded
- Crisis Services available 24/7
 - Chelan and Douglas Co - **509-662-7105** or **1-800-852-2923**
 - Grant Co - **509-765-1717** or **1-877-467-4303**

Contracted Outpatient Services – General Eligibility



- Funding
- Medical Necessity
 - Have a diagnosis, experience impairments as a result of the diagnosis, have needs related to those impairments, require the use of services to meet those needs, and benefit from the services provided
- Access to Care Standards
 - Diagnosis
 - Functional Impairment
- Level of Care
 - LOCUS/CALOCUS (MH)
 - ASAM (SUD)

Available Contracted Services: Mental Health



Name of Provider	Location	Outpatient	Crisis Services	Additional/Specialty Services
Grant Integrated Services, Grant Mental Healthcare <i>Grant County</i>	<ul style="list-style-type: none"> ▪ Moses Lake ▪ Quincy ▪ Grand Coulee ▪ Mattawa ▪ Royal City 	<ul style="list-style-type: none"> ▪ Adults, Youth, Families ▪ Therapy ▪ Case Management ▪ Groups ▪ Peer Services ▪ Medication Management 	<ul style="list-style-type: none"> ▪ Crisis Intervention ▪ Involuntary Treatment Act investigation and detention ▪ 24/7 Crisis Line 	<ul style="list-style-type: none"> ▪ Co-Occurring Disorders Services (Therapy, Group, Case Management) ▪ Supported Employment ▪ Jail Services ▪ LRA Monitoring ▪ Telehealth
Catholic Family and Child Service <i>Chelan/Douglas County</i>	<ul style="list-style-type: none"> ▪ Wenatchee ▪ Chelan 	<ul style="list-style-type: none"> ▪ Adults, Youth, Families ▪ Therapy ▪ Case Management ▪ Groups ▪ Peer Services ▪ Day Support ▪ Medication Management 	<ul style="list-style-type: none"> ▪ Crisis Intervention ▪ Involuntary Treatment Act investigation and detention ▪ Residential Crisis Stabilization ▪ 24/7 Crisis Line 	<ul style="list-style-type: none"> ▪ PACT for Schizophrenia and Bipolar I diagnoses ▪ Jail Services ▪ LRA Monitoring ▪ PORCH and Supported Housing ▪ Telehealth
Columbia Valley Community Health, Behavioral Health <i>Chelan/Douglas County</i>	<ul style="list-style-type: none"> ▪ Wenatchee ▪ East Wenatchee ▪ Chelan 	<ul style="list-style-type: none"> ▪ Adults, Youth, Families ▪ Therapy ▪ Case Management ▪ Groups ▪ Medication Management 		<ul style="list-style-type: none"> ▪ Trauma-Informed Care ▪ School-based Services for youth
Children's Home Society <i>Chelan/Douglas County</i>	<ul style="list-style-type: none"> ▪ Wenatchee ▪ East Wenatchee 	<ul style="list-style-type: none"> ▪ Youth, Families ▪ Therapy ▪ Case Management ▪ Groups 	<ul style="list-style-type: none"> ▪ 24/7 <u>WISe</u> Crisis Line 	<ul style="list-style-type: none"> ▪ <u>WISe</u> Program ▪ Telehealth

Available Contracted Services – Substance Use



Name of Provider	Location	Outpatient	Residential/Detox	Additional/Specialty Services
Grant Integrated Services, Prevention and Recovery Center <i>Grant County</i>	▪ Moses Lake	▪ Outpatient (ASAM 1) ▪ Intensive Outpatient (ASAM 2)		▪ DUI Assessments and Counseling per RCW ▪ Deferred Prosecution per RCW ▪ Alcohol and Drug Information School
The Center for Drug and Alcohol Treatment <i>Chelan/Douglas County</i>	▪ Wenatchee	▪ Outpatient (ASAM 1) ▪ Intensive Outpatient (ASAM 2)	▪ Sub-Acute Detox (ASAM 3.2) ▪ Intensive Inpatient Residential (ASAM 3.5)	▪ DUI Assessments and Counseling per RCW ▪ Deferred Prosecution per RCW ▪ Alcohol and Drug Information School ▪ Chemical Dependency Involuntary Treatment Act investigations and detentions
Various Out-of-Network Contracted Providers	▪ Various		▪ Intensive Inpatient Residential (ASAM 3.5) ▪ Recovery House (ASAM 3.1)	

Future Funding



**WORKING UNDER A MANAGED CARE
ORGANIZATION**

Future Funding



- Behavioral Health Integration Workgroup Crisis and Non Medicaid Services Sub-Group:
 - Services assigned to a Non-Medicaid entity:
 - ✦ Crisis Hotline
 - ✦ Mental Health CD ITA Investigations and related activities
 - ✦ Mobile Crisis Team
 - ✦ Limited tx services for non-Medicaid low income persons
 - ✦ Administer CJTA funds
 - ✦ Development of the regional “plan” for federal mental health and substance use block grants

Future Funding



- Workgroup recommendations cont'd:
 - Services assigned to and/or shared by MCOs and non-Medicaid entity:
 - ✦ Crisis Triage Centers and other crisis stabilization services
 - ✦ Manage FBGs
 - ✦ Community coordination activities (drug courts, jails, tribes, hospitals, etc.)
 - ✦ Manage funding for jail transition services
 - ✦ Monitor non-Medicaid persons on “Less Restrictive” court orders
 - ✦ Care coordination planning for non-Medicaid persons being admitted or discharged from the State Hospitals

Future Funding



- Workgroup recommendations cont'd:
 - Services assigned to non-Medicaid entity or some other local entity (county or non-profit)
 - ✦ Support the Behavioral Health Advisory Committee**
 - ✦ Ombudsman Services
 - ✦ Administer FYSPRT
 - ✦ Facilitate CLIP committees with participation by MCOs for their members

*****Must be independent from the MCOs***

Future Funding



- What's done in SW WA:
 - BH-ASO provides a series of services:
 - ✦ Crisis
 - ✦ CD ITA's
 - ✦ Ombuds Services
 - ✦ Block Grant Funding
 - ✦ CJTA
 - BH-ASO partners with ACH and MCO's
- A lot of is “to be determined” for NCW...

NCWBH – Thank You!



QUESTIONS??