

Wenatchee Supportive Housing Community



Serving Those Most In Need

- Approximately 400 people in Chelan & Douglas Counties are reported to be experiencing homelessness
- Hundreds more are at-risk
- In 2016, Catholic Charities Housing Services (CCHS) began pre-development work to serve the community's need for affordable housing

The Objective

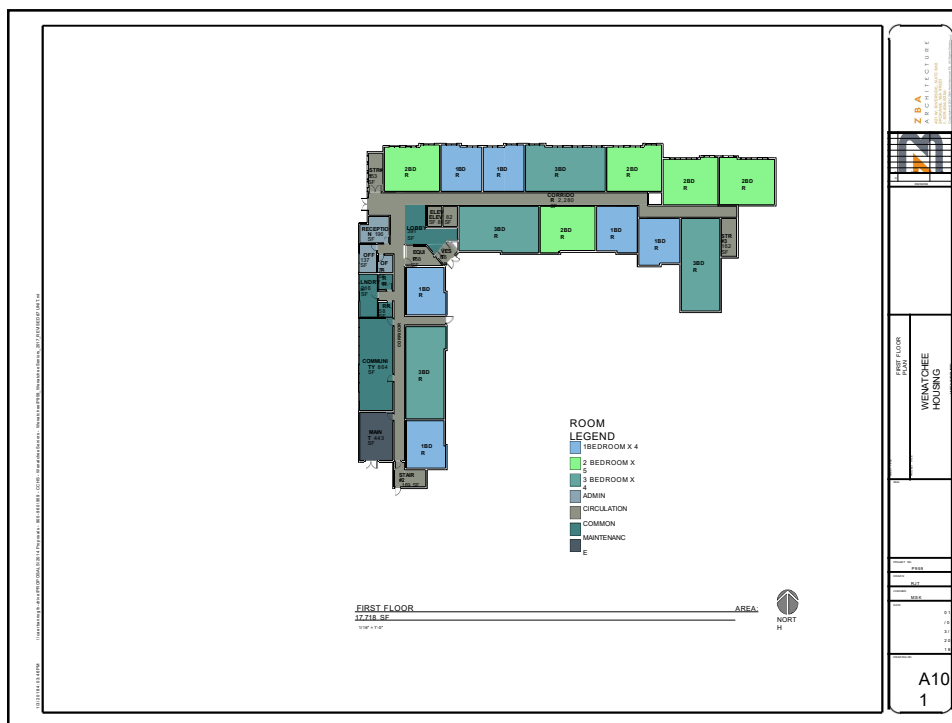
Reduce & alleviate the impacts of homelessness on individuals, families and the community of Wenatchee by creating Permanent Supportive Housing



Photos of children's bicycles at a local, transitional housing development

Overview of Wenatchee Supportive Housing Community

- 67 units
- Households with income from 30% to 60% Area Median Income
- (25) 1 bedrooms, (19) 2 bedrooms, (22) 3 bedrooms, (1) manager unit
- 50% Homeless , 22% Disabled, Balance General Low Income
- Rents, between \$214 and \$948 per unit



Timeline

- Construction is currently 38% complete
- Construction completion anticipated by the end of December 2019
- Move-In's Starting January 2020
- Applications and Lease-Up Process beginning Fall of 2019



Program Screening Criteria

- No Minimum Income Requirement
- Identification Required (photo ID, passport)
- Proof of U.S. Residency Status, Not Required
- Credit Check, Not Required
- Criminal Screening, Required
 - Applicants with a felony conviction related to violent or sex-related offenses are not approved to live at the development due to the high number of children that will be living there.

Homeless Eligibility

- Referral from Coordinated Entry system for Chelan & Douglas Counties
- Chronically Homeless (HUD definition)
- Drug & Alcohol Free – Not Required
- Must agree to participate in treatment – Not Required
- Must agree to participate in services – Not Required

Disability Eligibility

- WA State Department of Social & Health Services (DSHS) referral required (811 program)
- DSHS also provides case management services (in-home care)
- Medicaid provides payment for these services

General Low Income

- Applicants are to contact the Housing Authority of Chelan County & the City of Wenatchee (CCWHA) to get placed on the waiting list for the balance of the units
- 509-663-7421

Financing

- Catholic Charities Housing Services (Sponsor, General Partner)
- National Equity Fund (Limited Partner)
- Washington State Housing Finance Commission (Low Income Housing Tax Credit program)
- Washington State Housing Trust Fund
- City of Wenatchee
- Chelan County
- Private Loan
- Deferred Developer Fee

Partners & Roles

- **Catholic Charities Housing Services;** Owner, Development Manager,
Resident Services Coordinator, Asset Manager
- **Beacon Development Group;** Development Partner
- **ZBA Architects;** Architect
- **MC Lundgren;** General Contractor
- **Catholic Charities Serving Central WA;** Case Management & Coordinated Entry
- **Housing Authority of Chelan County & City of Wenatchee;**
Property Management, Section 8 Voucher Administration



Questions?