

Chelan-Douglas CHI

April 14, 2021



Agenda

- Introductions and Icebreaker
 - Name, Organization, Icebreaker Question
 - **Icebreaker Question:** Where is one place you lived in your childhood?
- Updates
 - NCACH Governing Board
 - Recap of March CHI Meeting
- Success Story
 - The Little Essential Pantries
- Domestic Violence and Child Abuse Awareness
 - SAGE and Chelan-Douglas CASA
 - Breakout Rooms
- Meeting Adjourned



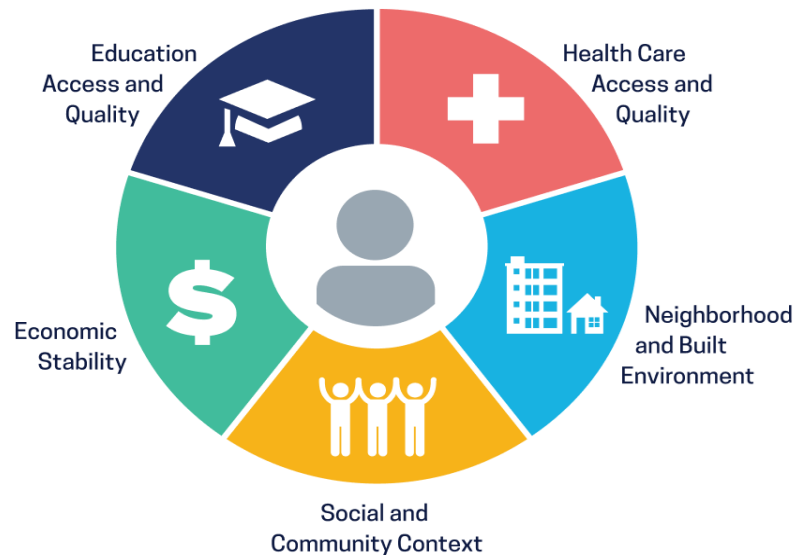
Charge of CHI:

The Charge:

The mission of the Chelan-Douglas Coalition for Health Improvement (“Coalition”) is to foster authentic community engagement, create an ongoing pathway for gathering input from diverse groups of community members, and identify local projects that could support the overall goals of the Medicaid Transformation Project.



Social Determinants of Health



Social Determinants of Health

Copyright-free

 Healthy People 2030

References:

Healthy People 2030, U.S. Department of Health and Human Services, Office of Disease Prevention and Health Promotion. Retrieved [date graphic was accessed], from <https://health.gov/healthypeople/objectives-and-data/social-determinants-health>

Updates

- NCACH Governing Board
- Recap of March CHI Meeting



Success Story

Featuring: The Little Essential Pantries



Domestic Violence and Child Abuse Awareness

- Presentations provided by SAGE & Chelan-Douglas CASA



Breakout Sessions-10 Minutes

How would you handle this situation? Does any work overlap where you could collaborate with another organization around these two topics?

What opportunities do YOU see for making progress on this challenge?

What ideas or actions do you recommend?

What is one idea that stood out in your conversation?



Group Discussion-8 Minutes

- Report Out from Breakout Groups



Thank you for attending!

