

Chelan-Douglas CHI

July 14, 2021



Agenda

- Introductions and Icebreaker
 - Name, Organization, Icebreaker Question
 - **Icebreaker Question:** What is your favorite way to beat the heat?
- Updates
 - NCACH Governing Board
 - Recap of June CHI Meeting
- Health & the Great Outdoors
 - Presentation by NCACH, Sustainable Wenatchee, Cascadia Conservation District and Methow Clean Air
 - Breakout Rooms and group discussion
- Meeting Adjourned



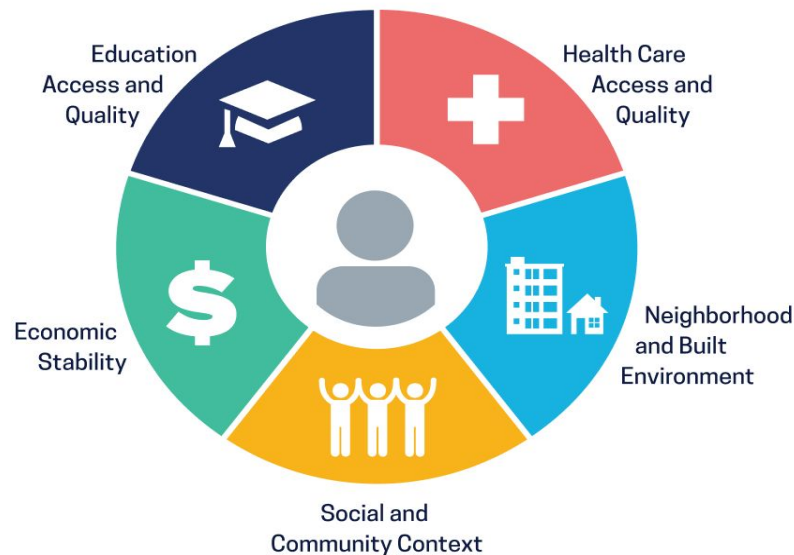
Charge of CHI:

The Charge:

The mission of the Chelan-Douglas Coalition for Health Improvement (“Coalition”) is to foster authentic community engagement, create an ongoing pathway for gathering input from diverse groups of community members, and identify local projects that could support the overall goals of the Medicaid Transformation Project.



Social Determinants of Health



Social Determinants of Health

Copyright-free

 Healthy People 2030

References:

Healthy People 2030, U.S. Department of Health and Human Services, Office of Disease Prevention and Health Promotion. Retrieved [date graphic was accessed], from <https://health.gov/healthypeople/objectives-and-data/social-determinants-health>

Updates

- NCACH Governing Board
- Recap of June CHI Meeting



Health & The Great Outdoors



Breakout Rooms

Did you learn something new today? What are your takeaways from today's presentations?

How does environmental health impact your health and wellbeing?

- While reflecting on the information provided, what can we do to improve environmental and community health?
- At the individual level?
- At the community level?
- At the State level?



Group Discussion

- Report Out from Breakout Groups



CHI Meeting Evaluation:



Thank you for attending!

