

Chelan-Douglas CHI

December 9, 2020



Agenda

- Introductions and Icebreaker Question
 - What's your favorite character from a Christmas-themed movie, book, or TV special?
- Updates
- Coalition Focus Areas: What is next for 2021?
- Meeting Adjourned



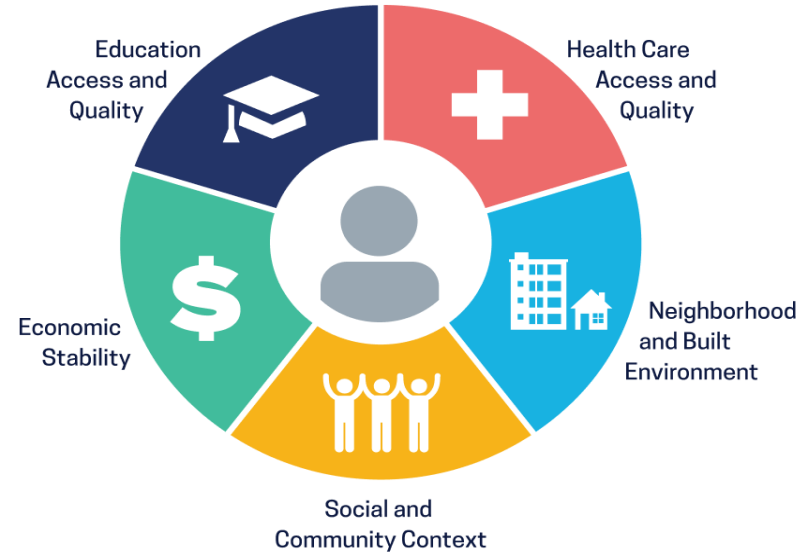
Charge of CHI:

The Charge:

The mission of the Chelan-Douglas Coalition for Health Improvement (“Coalition”) is to foster authentic community engagement, create an ongoing pathway for gathering input from diverse groups of community members, and identify local projects that could support the overall goals of the Medicaid Transformation Project.



Social Determinants of Health



Social Determinants of Health
Copyright-free

 Healthy People 2030

References:

Healthy People 2030, U.S. Department of Health and Human Services, Office of Disease Prevention and Health Promotion. Retrieved [date graphic was accessed], from <https://health.gov/healthypeople/objectives-and-data/social-determinants-health>

Updates

- NCACH Governing Board
- Recap of November CHI Meeting
 - Focus on Holiday events and projects



What has the coalition worked on?

Informational Presentations

- NAMI, Recovery Coalition and COVID at the local level
- Transportation
- Access to nutritional foods and supporting local food systems



Transportation

LANDSCAPE ASSESSMENT

Major Themes

- Education
- Bilingual/Cultural Competency
- Financial/In-Kind Support
- Non-Vehicle
- Potential Partnerships
- Unique Challenges

"We altered shift end times to allow an employee to catch his bus home to Cashmere."

"They did not give me the job for not arriving on time." <

Held town halls in eight locations across Chelan & Douglas Counties

Distributed a brief survey that resulted in 61 unique perspectives

54% OF RESPONDENTS USE THEIR PERSONAL VEHICLE FOR WORK WHILE ONLY 9.6% PREFER THIS METHOD

Goal: To come together as a community to create solutions that increase access to transportation programs and identify resources for workers and job-seekers in Chelan-Douglas Counties

- Distributed food bank routes along with provided an update at CHI meeting

Oxford House Transportation Pilot Project

- Subcommittee of CHI Members and developed from Town Halls and Chelan-Douglas Rides to Work Forum

Link Transit Routes for Food Banks								
	A	B		D	E	F	G	H
	Food Bank	Address of FB	Time open	Route number	Route times (starting at Columbia Station)	Walking distance from bus stop	Accessible?	Notes
1	St. Vincent DePaul	600 St. Joseph St., Wen	Sat. 8 a.m. -10 a.m.	RT. 5	8 a.m. 9 a.m. & 10 a.m.	Approx. 500 ft.	Yes	
3	Wenatchee Food Pantry	504 S. Chelan, Wen	Thurs. 8 a.m. - 10 a.m.	RT. A	6 a.m., every 1/2 hour	a block	Yes	
4	Rock Island Food Bank	5 N. Garden Ave., R.I.	Tues., 8 a.m. - 10 a.m.	RT. 23/Rock Island Rd	8 a.m. only/ 2 hour wait time		Yes	Uses a mobile trailer
5	Salvation Army	1205 S. Columbia, Wen	M-F, 1 p.m. - 3 p.m.	RT. 1	9 a.m. every 30 min.	Approx. 700 ft.	Questionable	Unpaved/uneven
6	Cashmere Emergency Food	109NC Railroad Ave., Cash.	Wed., 2:30 - 4:00	RT. 22	2:26, 3:36/rtn 4:36	Approx. 600 ft.	Yes	RR crossing
7	Community Cupboard	219 - 14th St., L'worth	Tues/Th., 11 a.m.-4p.m.	Dial A Ride **	By Reservation	door to door	Yes	Rough curbs cut
8	Waterville Food Bank	413 S. Central Ave., W'ville	Thurs. 2 p.m. - 3 p.m.	RT. 25 from Wenatchee	Arrive 2:24, rtn 4:25 from court house	Approx. 750 ft.	Yes	No local city route. Only Douglas Co. Court house
9	Lake Chelan Food Bank	417 Bradley St., Chelan	Mon., 9 a.m. - 10 a.m.	Dial A Ride**	By Reservation	door to door	Yes	
10	Entiat Food Bank	2084 Entiat Way, Entiat	Sat. 9 a.m. - 11 p.m.	N/A	N/A	Delivery available for eligible.	Yes	No local city route.
11	Town Toyota Center (temporary until further notice.)	1300 Walla Walla Ave, Wen	Wed. 4 p.m. - 7 p.m.	Designated RT. B	4 p.m./every 30 minutes	N/A	Yes	Ck. for cont. service and availability. Call Serve Wenatchee Valley - (509) 663-4673
12	ALL ROUTES ARE SO FARE UNTIL FURTHER NOTICE DUE TO THE COVID-19 PANDEMIC.							
13	-All routes are subject to change.							
14	-Please double check the website at www.linktransit.com or call Link Transit at (509) 662-1155 for updated information regarding routes.							
15	-Buses may accommodate 24" X 17" roll on carriers or baskets, similar to carry ons for air flight. Please call Link for more information.							
16								
17	For Travel Training (instructions to ride the bus) call (509) 662-1155. Travel Training is a free service through Link Transit.							
18								

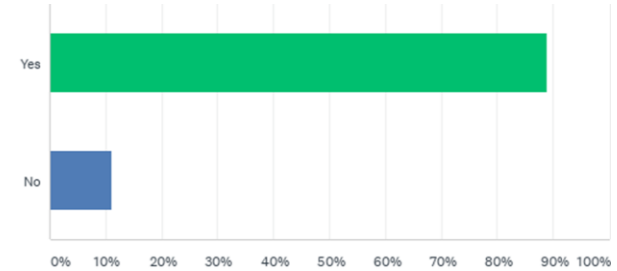


Access to Nutritional Foods and Supporting Local Food Systems

- Presentations by Little Essential Pantries, Garden Terrace, Chelan Douglas Community Action Council, Upper Valley Mend, and Wenatchee Valley College
- Access to Food Surveys
 - Care Coordinators/Case Managers
 - Community Members
- Discussions with Wenatchee Nazarene Church and Teens Helping Seniors to help fill gaps



Q6: If it were available, would you use a delivery system to receive supplies from your local food/bank/food pantry to your house or neighborhood?



ANSWER CHOICES	RESPONSES	
Yes	88.89%	16
No	11.11%	2
TOTAL		18

Access to Food Survey Result

Pictures provided by: Chelan Douglas Community Action Council

What is next for 2021?

Behavioral Health

Behavioral health encompasses traditional mental health and substance use disorders, as well as overall psychological well-being (8). Behavioral health can be understood as the behaviors that affect physical and mental health, and good behavioral health results in a “state of mind characterized by emotional well-being, good behavioral adjustment, relative freedom from anxiety and disabling symptoms, and a capacity to establish constructive relationships and cope with the ordinary demands and stresses of life” (9).

- With 6.6 million people applying for unemployment in the past month, there is major concern among mental health workers how this will impact depression and suicide rates. And more than 1 in 3 people who die from suicide are under the influence of alcohol at the time of death, NAMI reports.
- A recent survey found that 80% of students have experienced some negative impact to their mental health due to the pandemic. 20% say their mental health has significantly worsened.

Reference:

[https://www.cdc.gov/pcd/issues/2020/20_0261.htm#:~:text=Top-,The%20Definition%20and%20Application%20of%20Behavioral%20Health,well%2Dbeing%20\(8\).](https://www.cdc.gov/pcd/issues/2020/20_0261.htm#:~:text=Top-,The%20Definition%20and%20Application%20of%20Behavioral%20Health,well%2Dbeing%20(8).)

<https://abcnews.go.com/Health/unemployment-isolation-covid-19s-mental-health-impact/story?id=69939700>

<https://www.healthcentral.com/article/mental-health-effects-of-covid-19-on-students>

What is next for 2021?

Strategic Planning:

What will the Chelan-Douglas CHI be after the Medicaid Transformation Project (MTP)?



Let's hear from the coalition:

- What did you enjoy this past year?
- What are you hoping the coalition accomplishes in 2021?
- Any activities that you would like to add for 2021?



Updates

- Leadership Council nominations for 2021



Thank you for attending!

