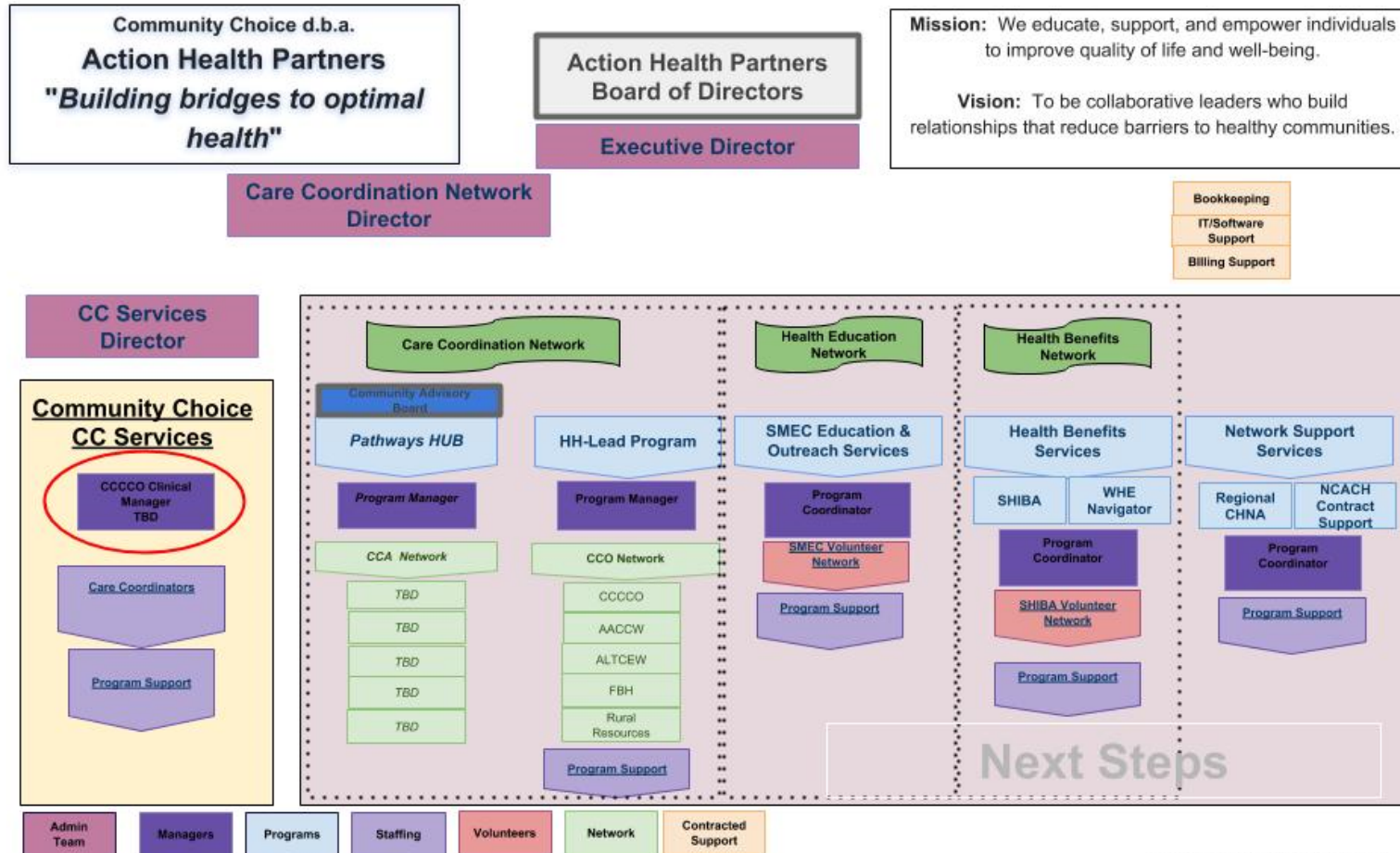


Elevator Speech

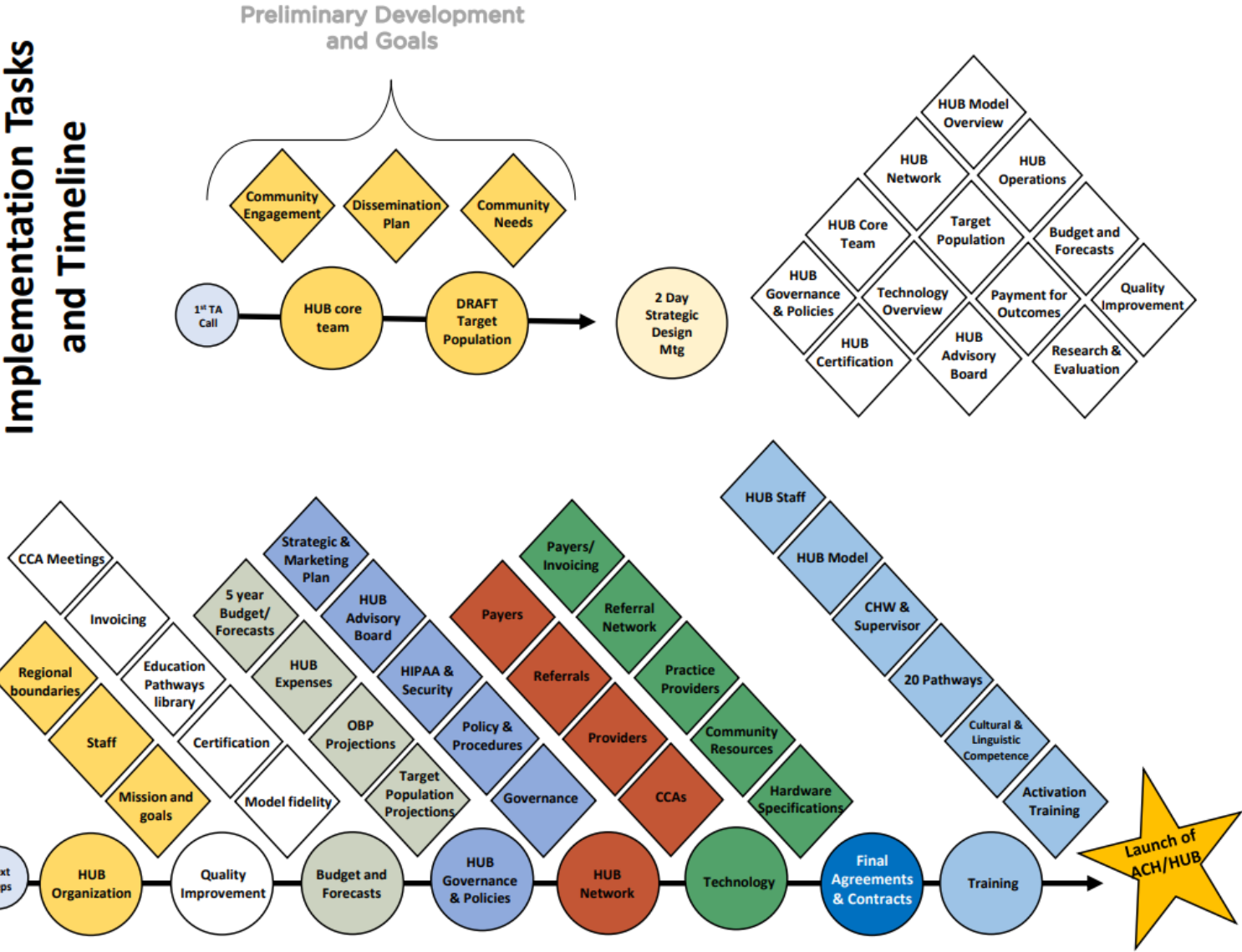
- The **Pathways Community HUB** reduces the gap between primary care and community services by creating a bridge to whole person, integrated care.
- This is accomplished by building a network of **Care Coordination Agencies** that employ trained **Community Health Workers (CHW)** who are sent out into the community to meet with individuals referred into the HUB.
- The CHW are *community peers* who are trained to work out in the community in partnership with individuals to assess and identify potential barriers to health.
- The tools used to breakdown the identified barriers are **outcome based pathways** that guide the steps to health, while at the same time **measure and report of value** of the services delivered.

HUB Organization

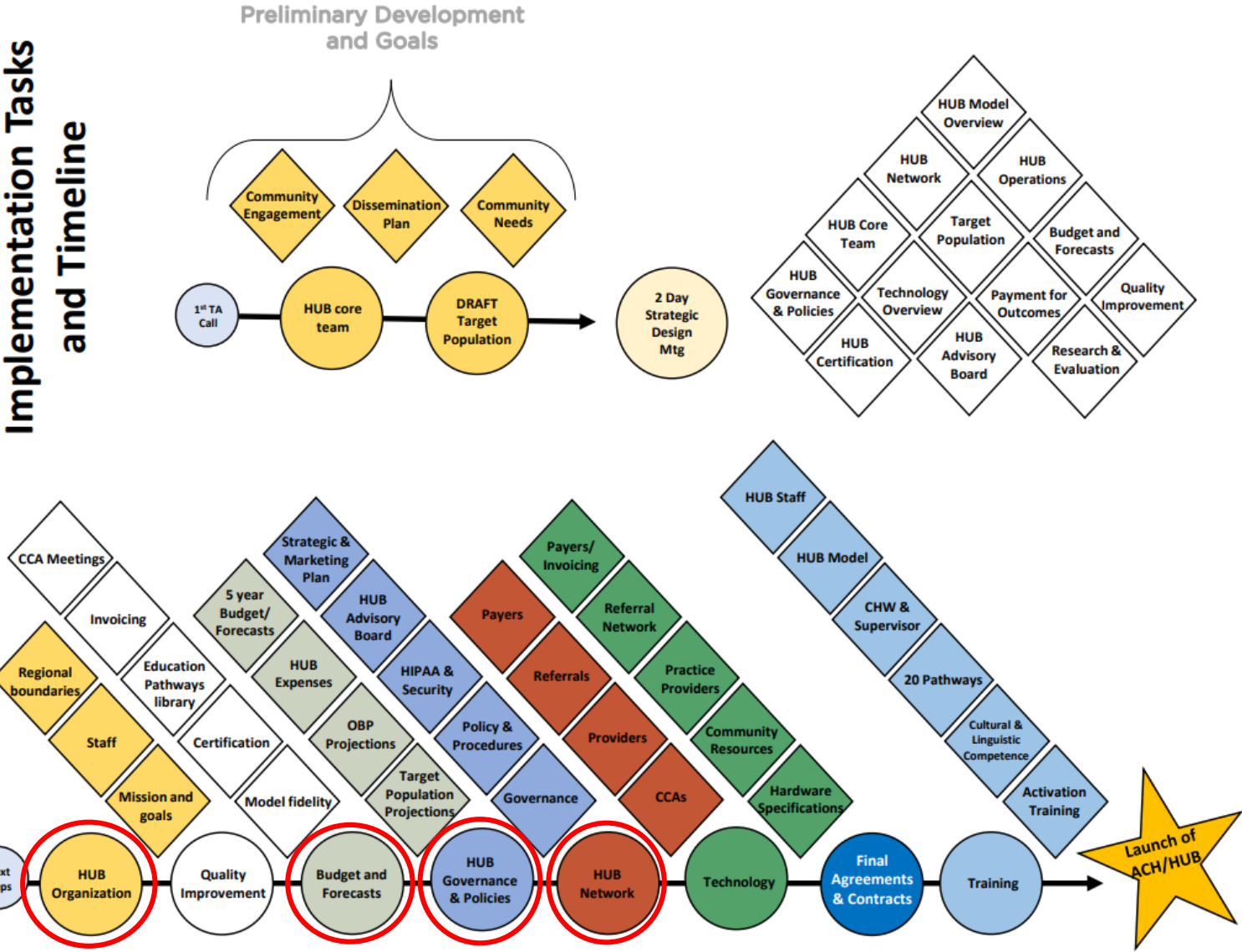


Last updated: 06-27-2018

Implementation Tasks and Timeline



Implementation Tasks and Timeline



HUB Organization Team

- Team Members:

- Deb Miller
- Christal Eshelman

- Implementation Steps:

- Mission and Goals (IN PROGRESS)
- Staff (COMPLETE)
- Regional Boundaries (COMPLETE)

Budget & Forecasts Team

- Team Members:

- Ryan Stillman
- Jeff Davis
- John Schapman
- Christal Eshelman
- Kim Fricke

- Implementation Steps:

- Target Population Projections
- OBP Projections
- HUB Expenses
- 5 Yr. Budget/Forecasts

HUB Governance & Policies Team

- Team Members:

- Ryan Stillman
- Kayelee Miller
- Jeff Davis
- Christal Eshelman
- Brooklyn Holton
- Lisa Apple
- Kim Fricke

- Implementation Steps:

- Governance
- Policy & Procedures
- HIPAA & Security
- HUB Advisory Board
- Strategic & Marketing Plan

HUB Network Team

- Team Members:

- Deb Miller
- Molly Morris
- Christal Eshelman

- Implementation Steps:

- CCAs
- Providers
- Referrals
- Payers

Implementation Tasks and Timeline

- HUB Director/Staff and CCA Supervisor Training
 - July 30-Aug 3 (Location TBD)
- CHW Training Week #1
 - Aug 20-24 (Location TBD)
- CHW Training Week #2
 - Sept 24-28

Quality Improvement Team

- Team Members:

- Kayelee Miller
- Ryan Stillman
- Christal Eshelman
- Barry Kling
- Virginia O'Kelly

- Implementation Steps:

- Model Fidelity
- Certification
- Education Pathways Library
- Invoicing
- CCA Meetings

Technology Team

- Team Members:

- Kayelee Miller
- Ryan Stillman
- Christal Eshelman
- Barry Kling
- Lisa Apple
- Virginia O'Kelly

- Implementation Steps:

- Hardware Specifications
- Community Resources
- Practice Providers
- Referral Network
- Payers/Invoicing

Training Team

- Team Members:

- Deb Miller
- Kayelee Miller
- Christal Eshelman
- Brooklyn Holton
- Molly Morris
- Ryan Stillman

- Implementation Steps:

- Activation Training
- Cultural & Linguistic Competence
- 20 Pathways
- CHW & Supervisor
- HUB Model
- HUB Staff