

MCO Overview

Okanogan ACH Meeting



Agenda

- MCO Overviews
- IMC Overview
- Review IMC Implementation Timeline
- Questions and Answers

Amerigroup Overview Whole Person Care

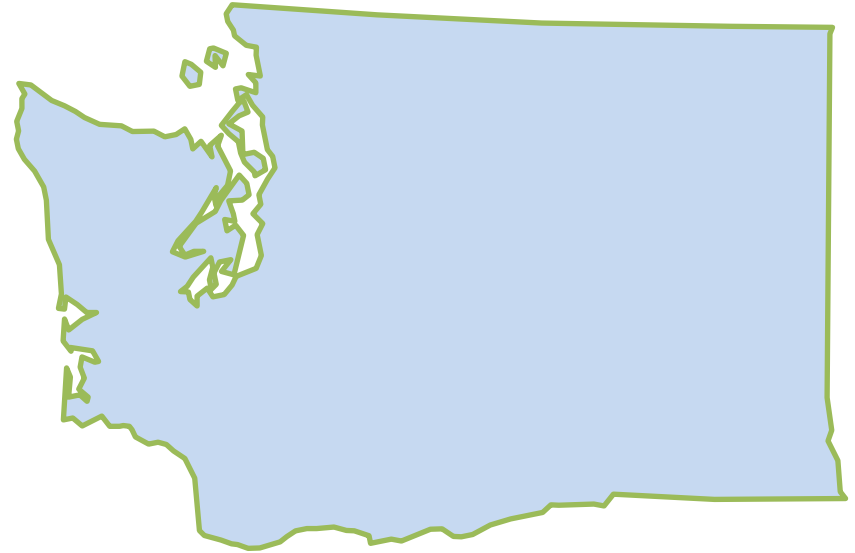
Amerigroup Washington proudly serves over 150,000 members receiving Washington Apple Health Medicaid benefits.

We believe healthcare only starts with the best doctors but to really improve health outcomes we have to address social determinants of health.

We have to be innovative. We work closely with local organizations to address real challenges many of our members face every day.

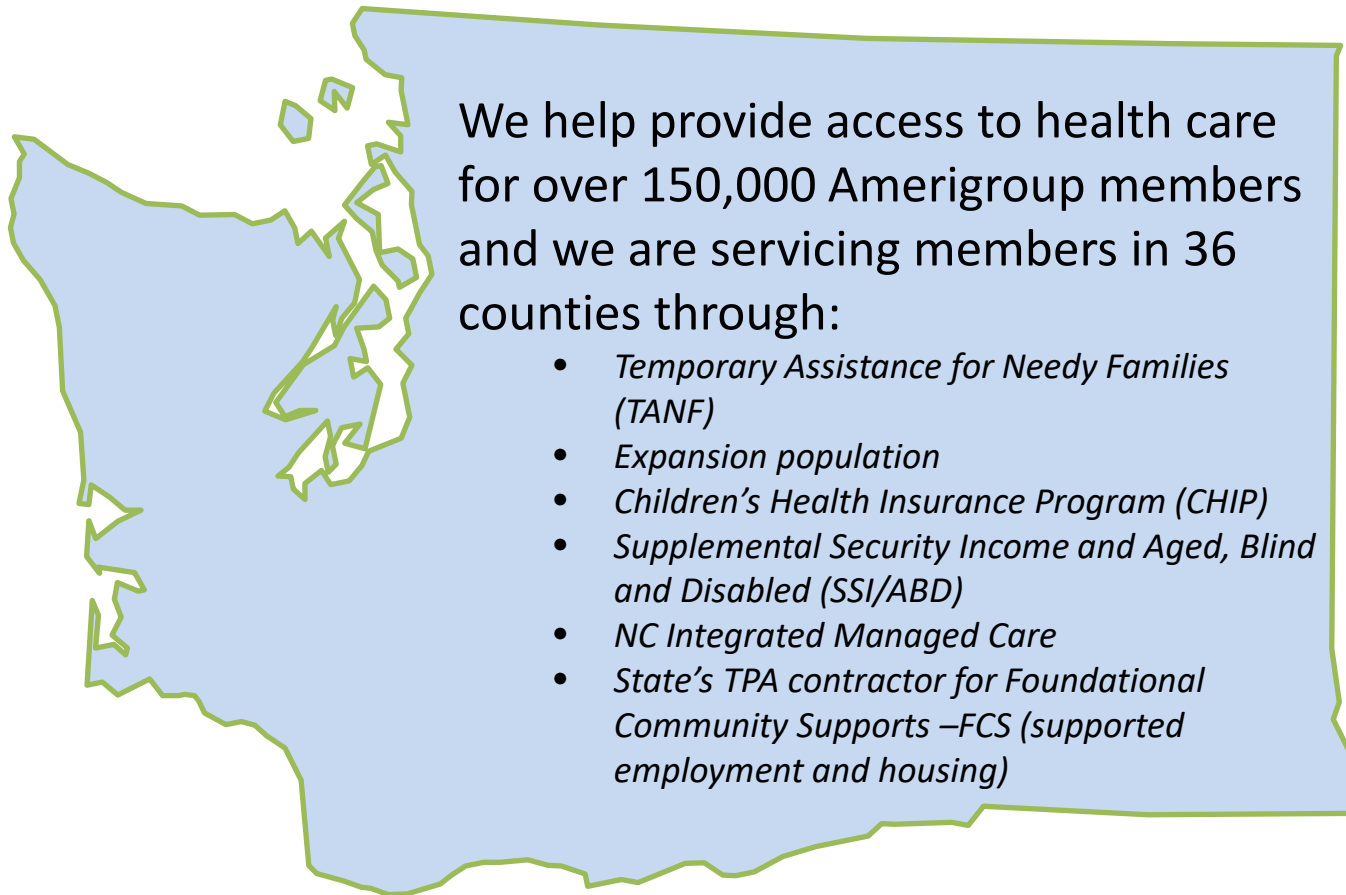
We celebrate and invest in our diverse communities and do our very best to make Washington happy and healthy for everyone.

Whole Person Care also means supporting organizations that are focused on creating healthy communities.



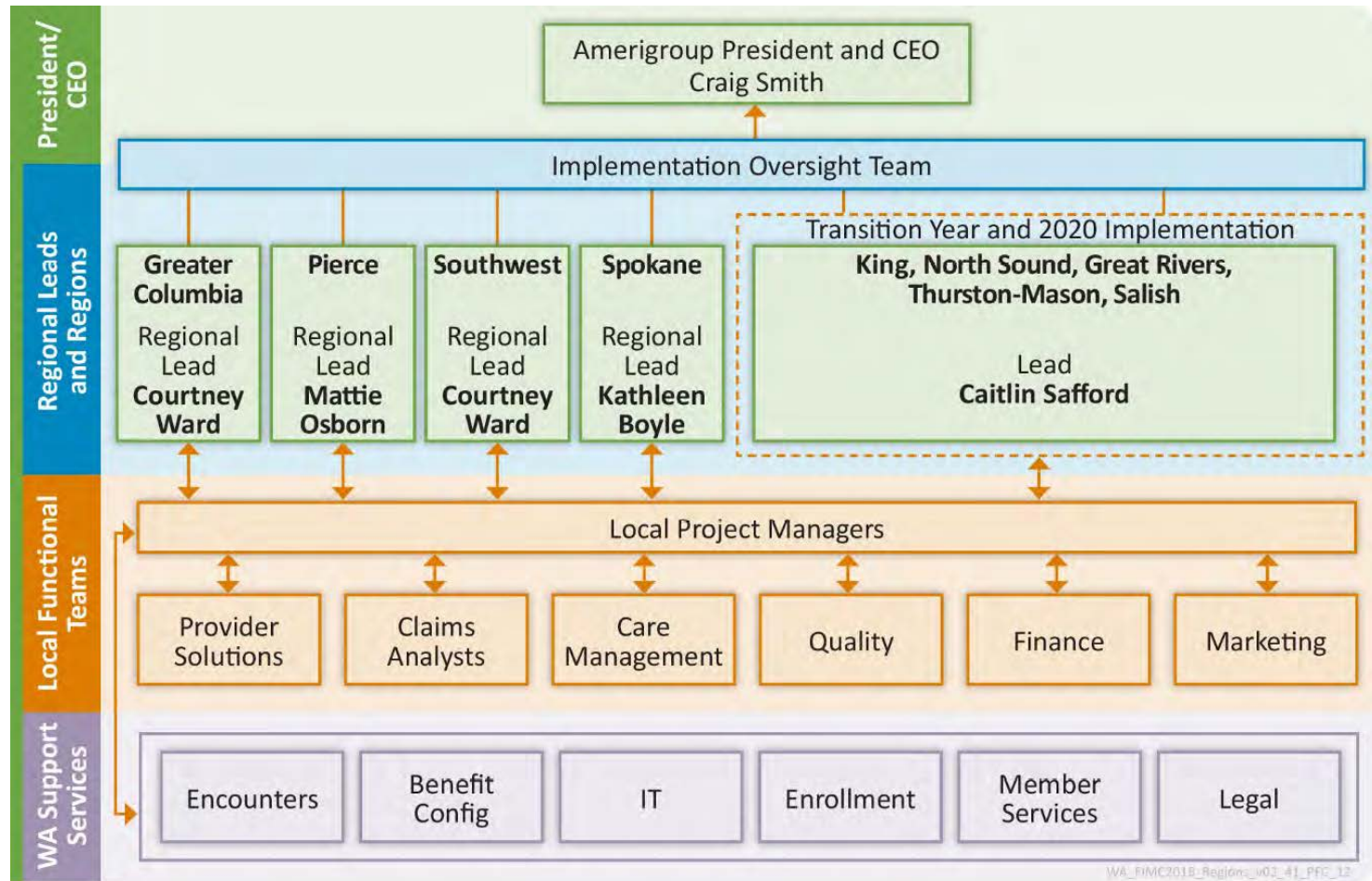


Amerigroup Washington



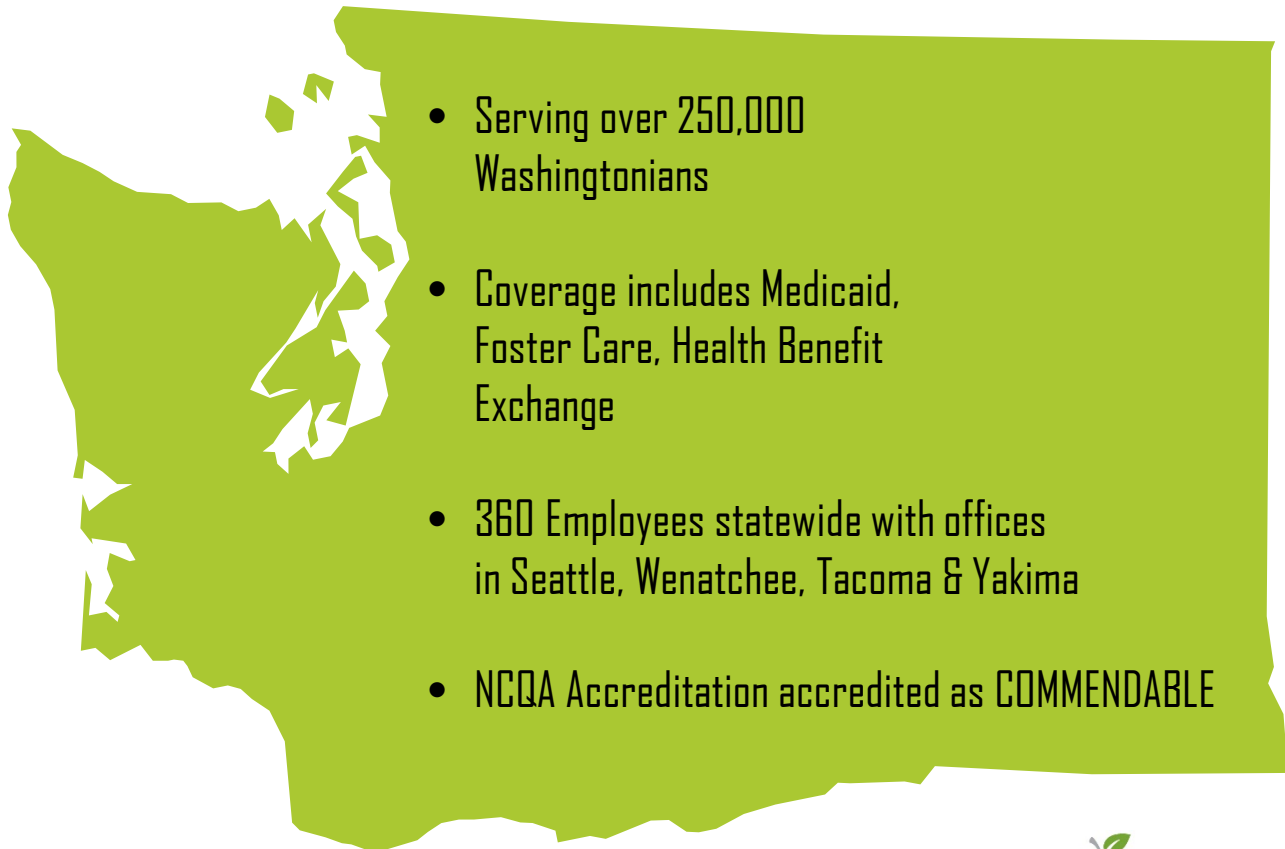
Amerigroup
RealSolutions
in healthcare

Amerigroup Implementation

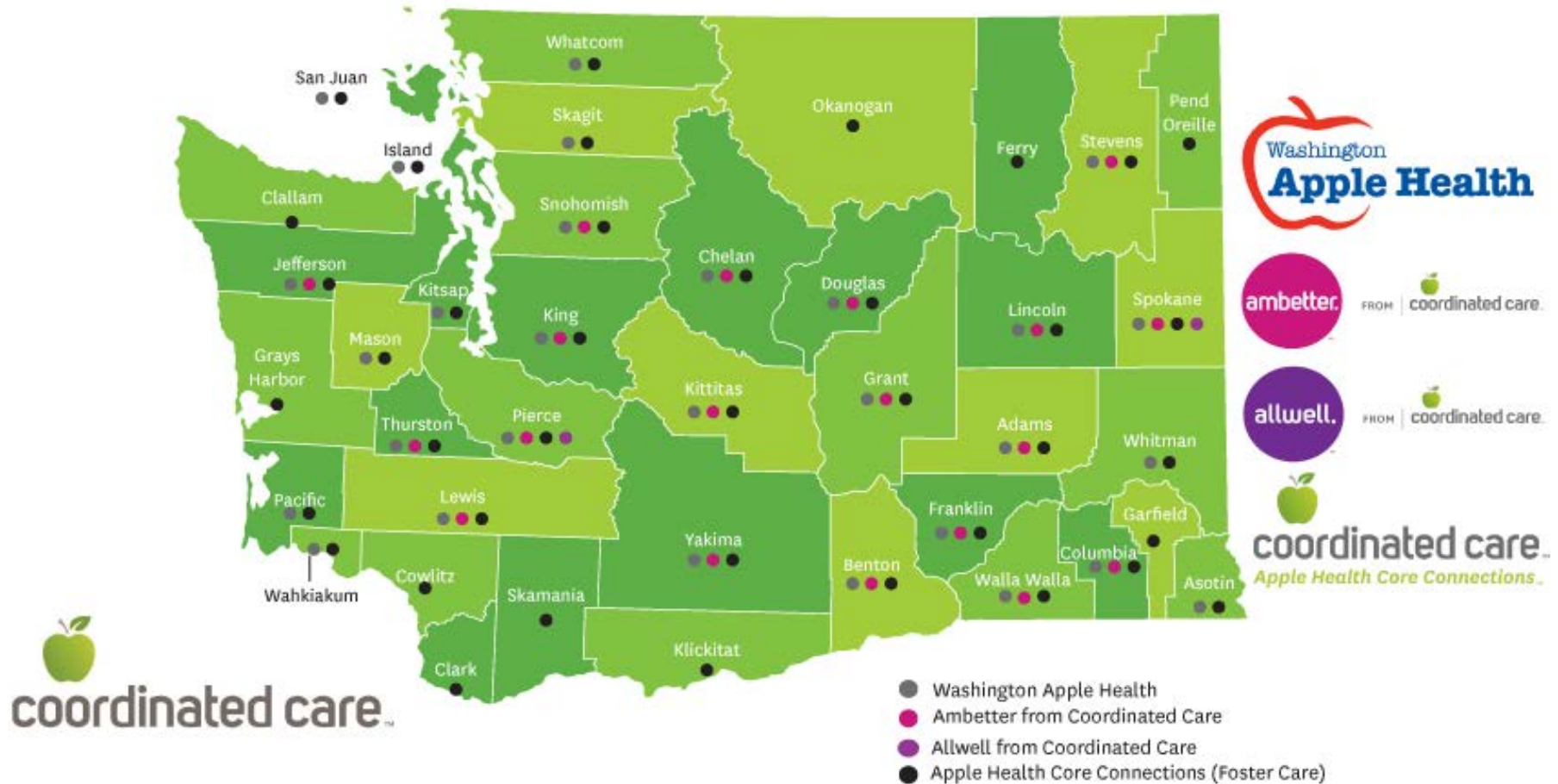


Coordinated Care of WA

Mission Statement: To be the **highest quality** health plan in Washington, and the **health plan of choice** for members and providers.



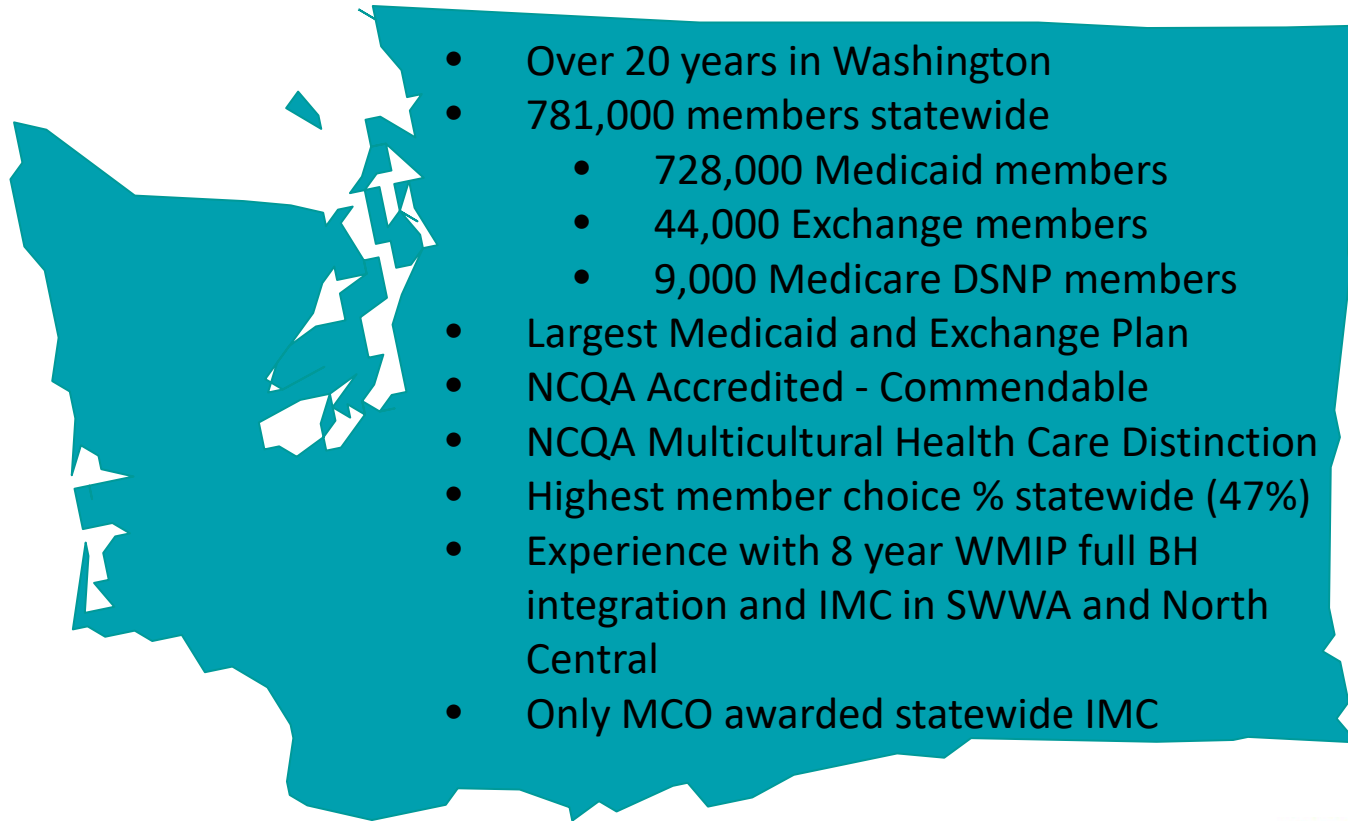
Coordinated Care: We've Got You Covered



Molina Healthcare Washington

Our Mission

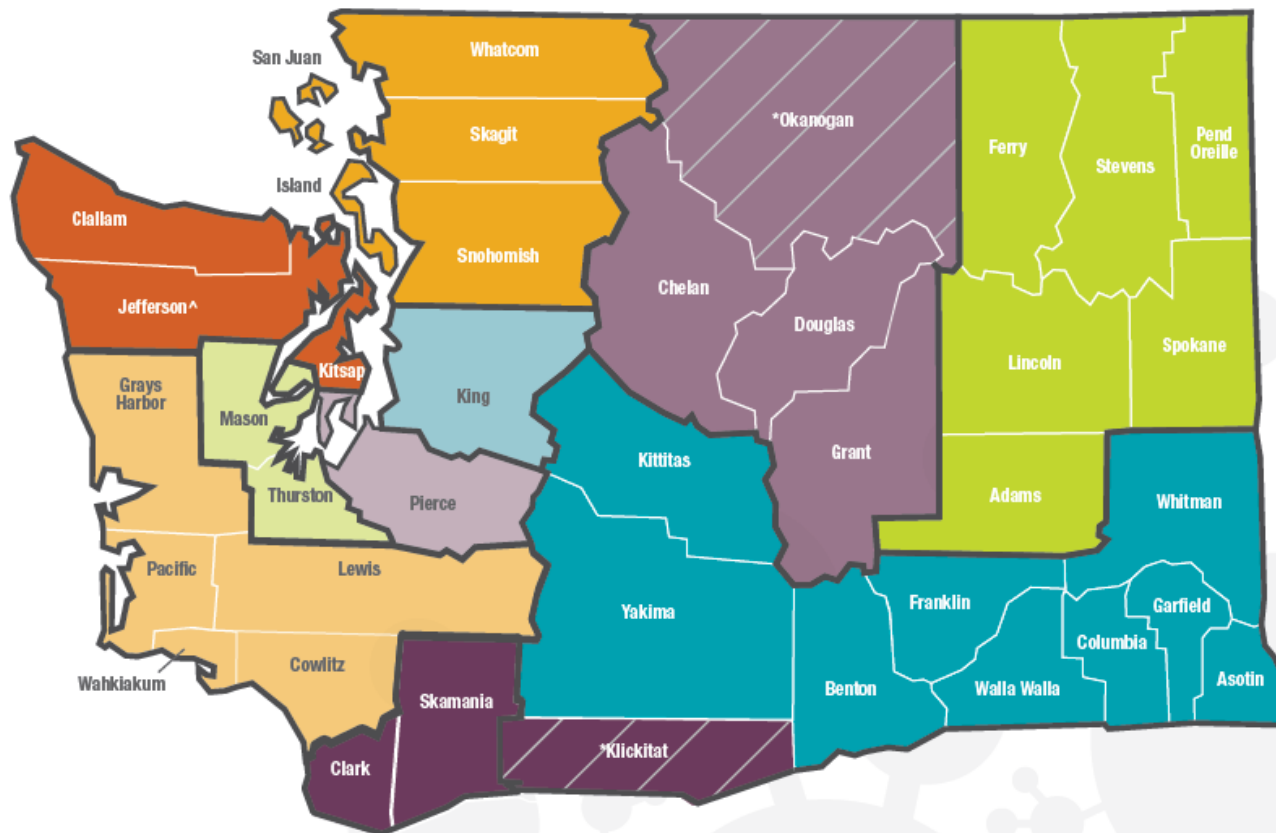
To provide quality healthcare to people receiving government assistance



Service Area by Region

Effective January 1, 2017

- North Sound**
 AH, MMOP
 MMC = Snohomish County Only
- North Central**
 AH
- Spokane**
 AH, MP
 MMOP = Stevens and Spokane County Only
- King**
 AH, MMOP, MP
- Pierce**
 AH, MMOP, MP, MMC
- Peninsula**
 AH
- Thurston-Mason**
 AH, MP
- Timberlands**
 AH
- SW WA**
 FIMC, BHSO, MP
- Greater Columbia**
 AH
 MMOP = Whitman County Only
 MP = Kittitas County Only



AH = Apple Health Medicaid

MP = Marketplace

BHSO = Behavioral Health Services Only

FIMC = Fully Integrated Managed Care

MMC = Molina Medicare Choice

MMOP = Molina Medicare Options Plus

^ = Not in Service Area

* = could transition to another region

IMC Overview

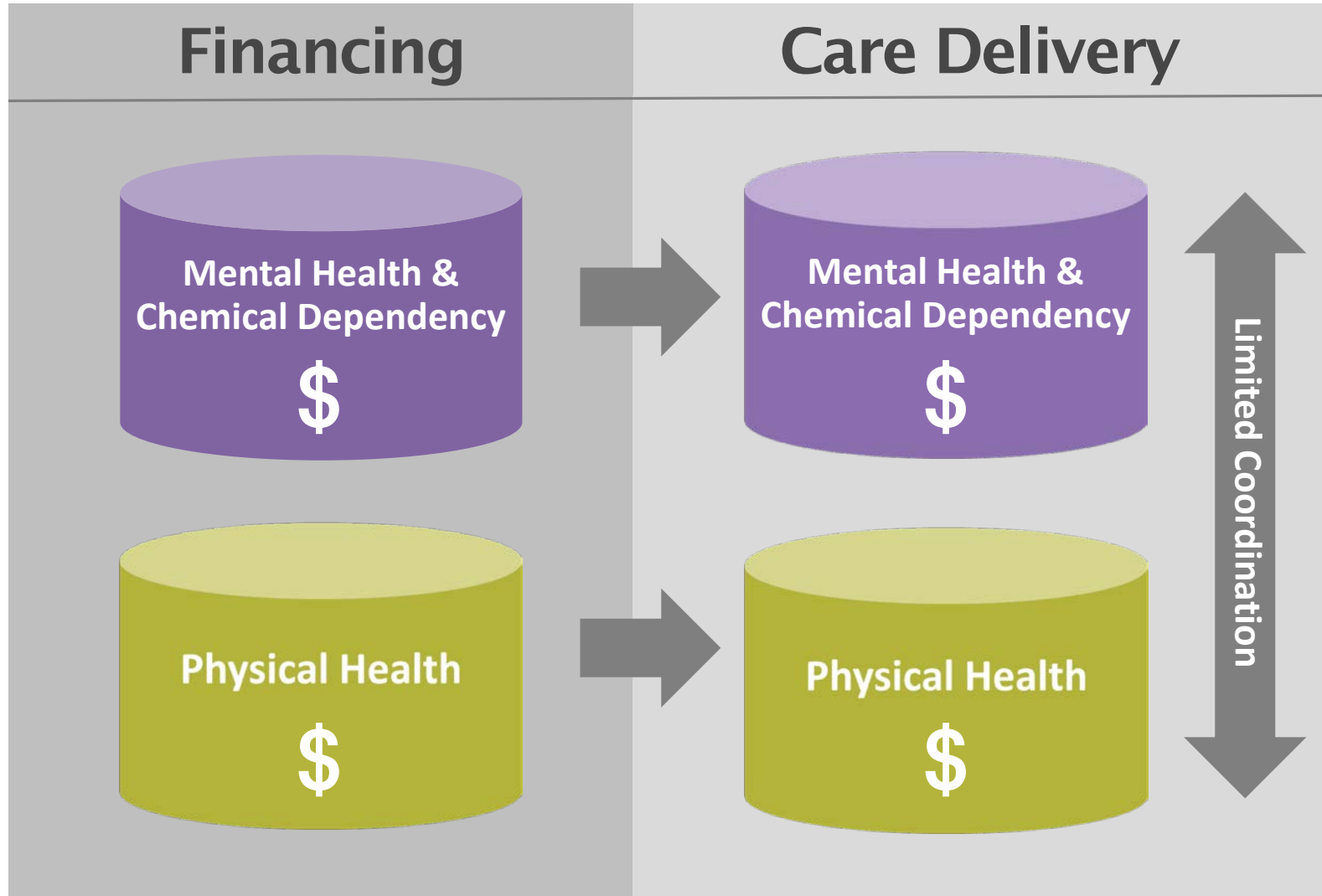


Okanogan IMC Go-Live



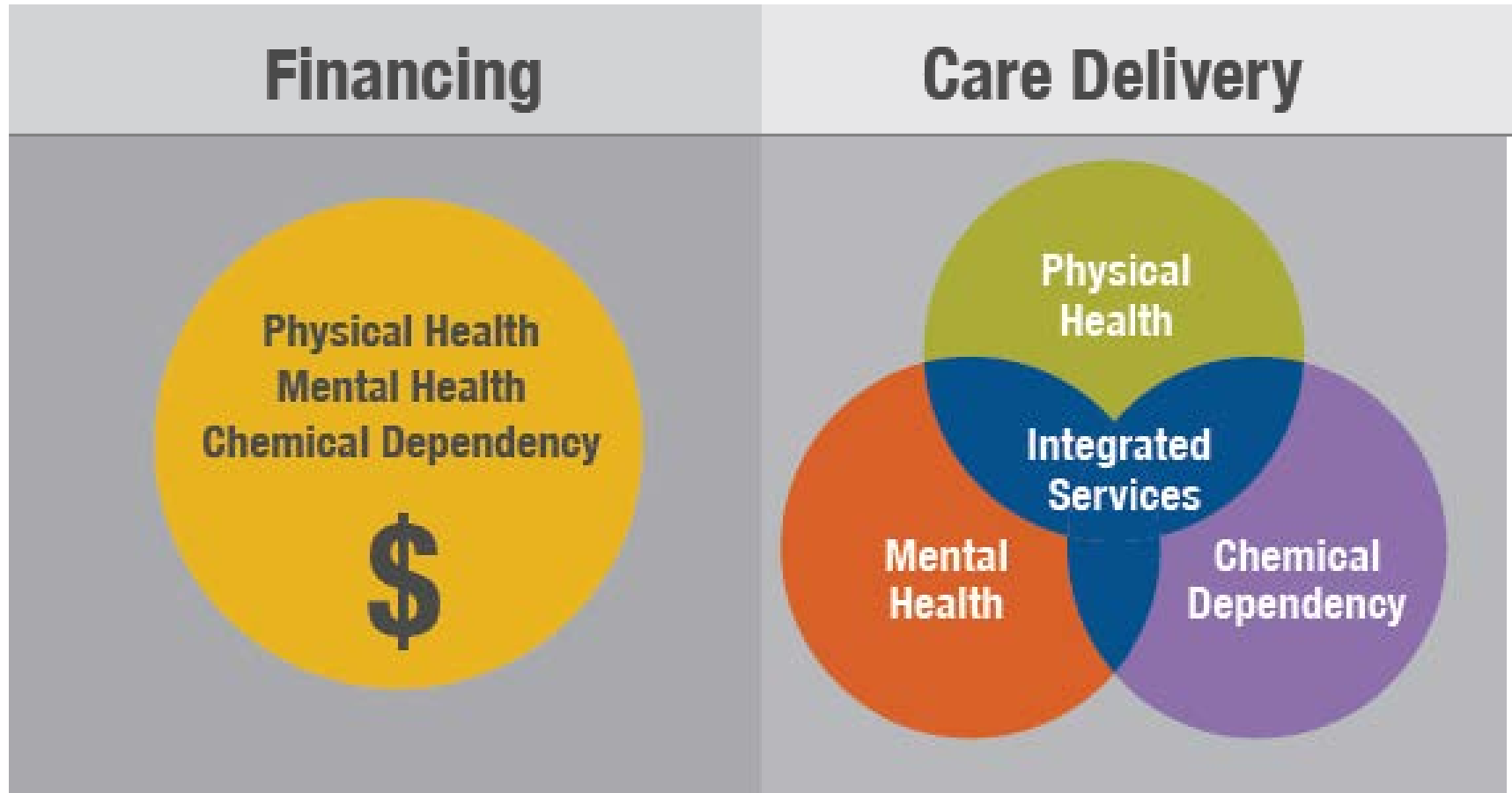
NOTE: Medicaid member in surrounding counties will remain Apple Health with Apple Health benefits.

Current State: Fragmented Financing and Care



Future State:

Integrated Financing = Integrated Care



Two HCA Contracts Cover All Enrollees

Medicaid Covered Services

- Physical Health (e.g. Apple Health)
- Mental Health (MH)
- Substance Use Disorder (SUD)
 - NOTE: MH and SUD = Behavioral Health (BH)

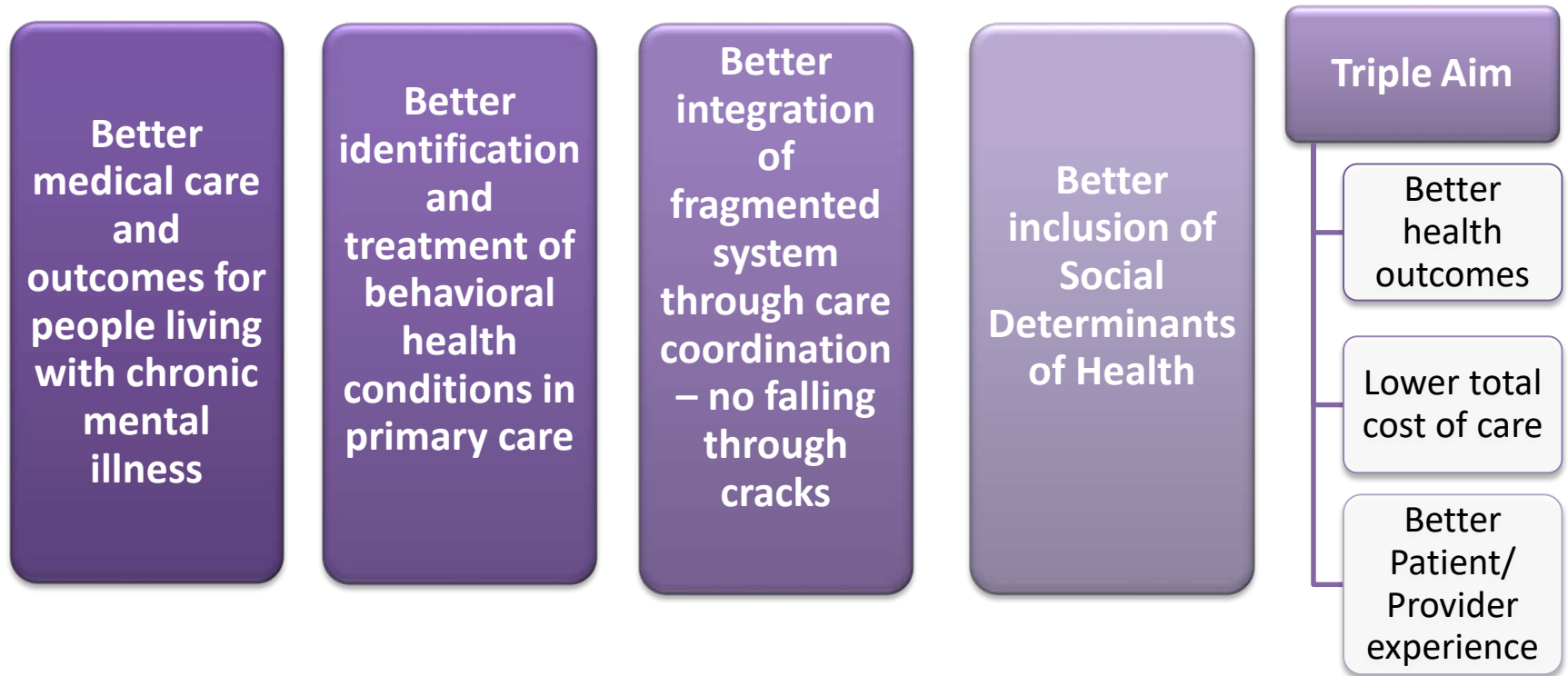
Wrap Around Benefits

- Behavioral Health services **NOT** covered or funded by Medicaid
- These services are funded by General Fund – State dollars
- Examples of services:
 - eg. room & board, sobering services

Enrollees

- Apple Health Medicaid children, families, adults, blind/disabled
- Behavioral Health Services Only (BHSO) members will only receive behavioral health benefits through MCOs. Medical benefits remain Fee-For-Service

What Does Better Look Like?



Provider Network

Primary Care

- Integrated Delivery Systems (Confluence)
- Primary Care Clinics (i.e. Columbia Valley Community Health, Moses Lake CHC, Columbia Basin Health Association)

Mental Health

- State Hospitals--MCOs do not administer this benefit
- Inpatient Psychiatric Hospitals
- Community Mental Health Agencies
- Behavioral Health Providers-Group Practices
- Individual Behavioral Health Providers

Substance Use

- Substance Use Disorder (SUD)/ Chemical Dependency Agencies
- Inpatient and Outpatient Treatment

Behavioral Health Administrative Services Organization (BH-ASO)

- Beacon Health- provides crisis service response 24 hours a day/7 days a week/365 days a year and administers non-Medicaid services to non-Medicaid members

Coming Soon: IMC Symposiums

Topics to include:

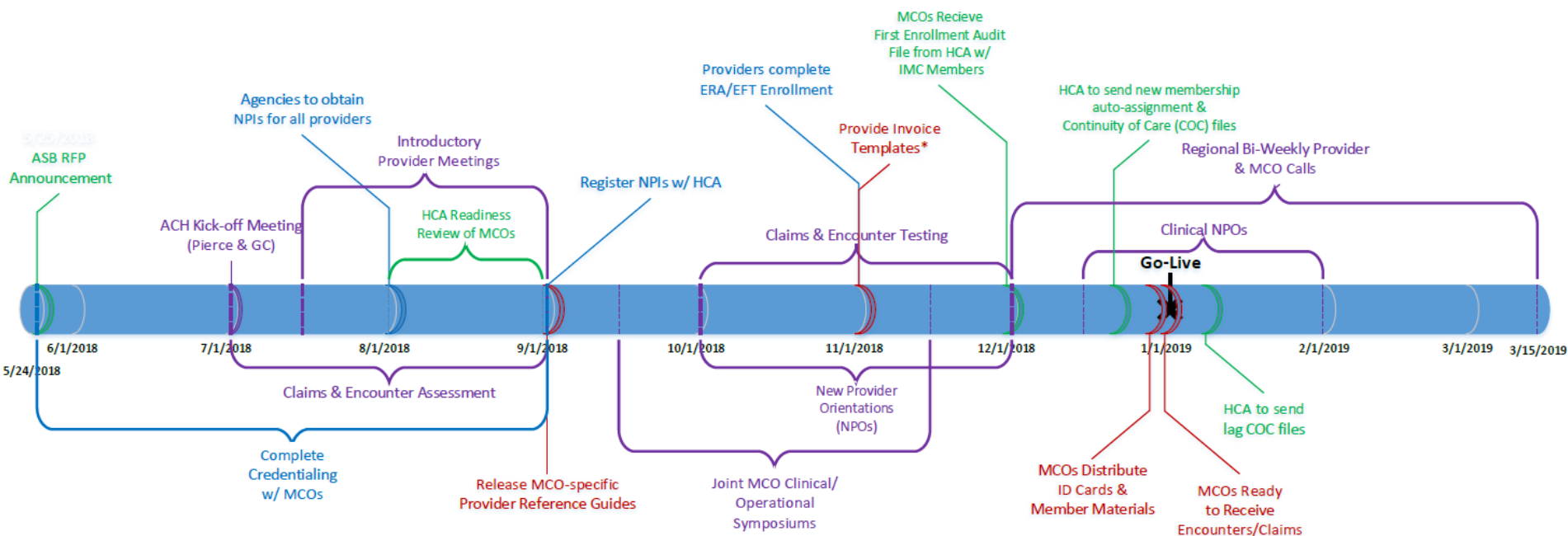
- Credentialing
- Access to Care & Access Standards
- Websites, Portals & Directories
- Claims and Billing
- Prior Authorizations
- Resources
 - Member Appeals & Grievance
 - Interpreter Services
 - HCA Transportation Broker
 - MCO Forms
 - Helpful Links



Implementation Timeline

Provider Readiness Timeline

What to Expect Between Now and Go-Live 1/1/2019



Color Key:

- Green: HCA tasks
- Red: MCO tasks
- Blue: Provider tasks
- Purple: Provider & MCO collaboration

* May not apply to all plans

Questions & Answers



Thank you for joining us today.

