

NORTH CENTRAL ROAD TO BETTER HEALTH

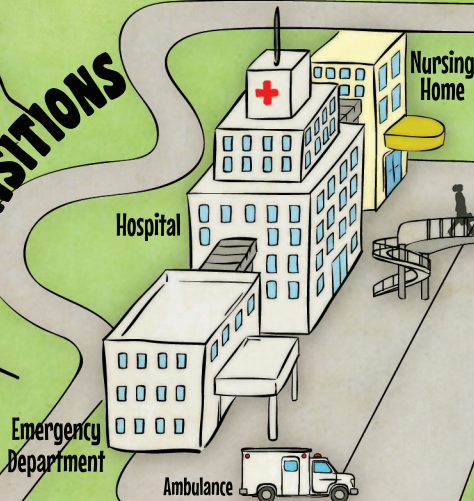
Welcome to
Whole Person Care:
Population You!



Opioid
Longterm
Recovery

NUTRITION
EXERCISE
CHRONIC DISEASE
PREVENTION AND
MANAGEMENT
SCREENING → HEALTH EDUCATION

TRANSITIONS



Substance Use
Disorder Services



Opioid
Treatment

Grand Coulee Dam
Colville Tribes
Lake Chelan

Employment

PATHWAYS COMMUNITY HUB



Opioid
Prevention

RULES OF THE ROAD

- Whole Person Care
- Fully-Integrated Managed Care (FIMC)
- Sustainability
- Health Equity

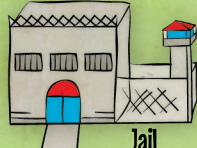
ROAD WARRIORS

- Whole Person Care Collaborative
- Coalitions for Health Improvement
- Pathways Community HUB
- Regional Opioid Workgroup
- Transitional Care and Diversion Interventions Workgroup

ROAD CONDITIONS

Social determinants of health are conditions in the environments in which people are born, live, learn, work, play, worship, and age that affect a wide range of health, functioning, and quality-of-life outcomes and risks. Some examples of social determinants include: safe housing, education, job opportunities, access to health care services, transportation, public safety, social support, and socioeconomic conditions.

CARE COORDINATION



Jail

DETOUR

DIVERSIONS

Housing

Opioid
Overdose
Prevention

Farm

Bus



PRIMARY CARE

BEHAVIORAL HEALTH

CONSTRUCTION COMING SOON

- Work Force
- Population Health Management
- Value-Based Payment



North Central Accountable
Community of Health

ncach.org