



North Central Accountable Community of Health

September, 2017



AN UPDATE FROM THE EXECUTIVE DIRECTOR,

LINDA EVANS PARLETTE

August was a busy month for the North Central ACH. I presented at the Wednesday night study group and at the Columbia Valley Community Health Board Meeting. Our team has attended and facilitated many meetings and webinars throughout the month. I am most excited that the Coalitions for Health Improvement groups are ramping up. Chelan-Douglas has selected their NCACH Board Member. Okanogan and Grant County are in the process of choosing the nominees for their NCACH Board Member. Meeting the August 14th Phase II Certification deadline was the major task since our last board meeting. Thanks to John, Andrea, and the NCACH team for contributing to the final document.

We recently received notification from the Health Care Authority on the scoring process for certification phase II, highlights include...

- Category specific subject matter expert reviewers and overall HCA reviewers will meet for consensus-based scoring
- Reviewers begin their review with the premise that the application is excellent and will deduct points if needed (versus starting with 0 points and working their way up)
- The final recommended scores will go to the Consulted Leadership Team for final consideration and approval. This team includes HW leadership group including senior leadership from HCA, DSHS, DoH, Governor's Office and Office of Financial Management (OFM)
- Final scores are set to be released mid-September

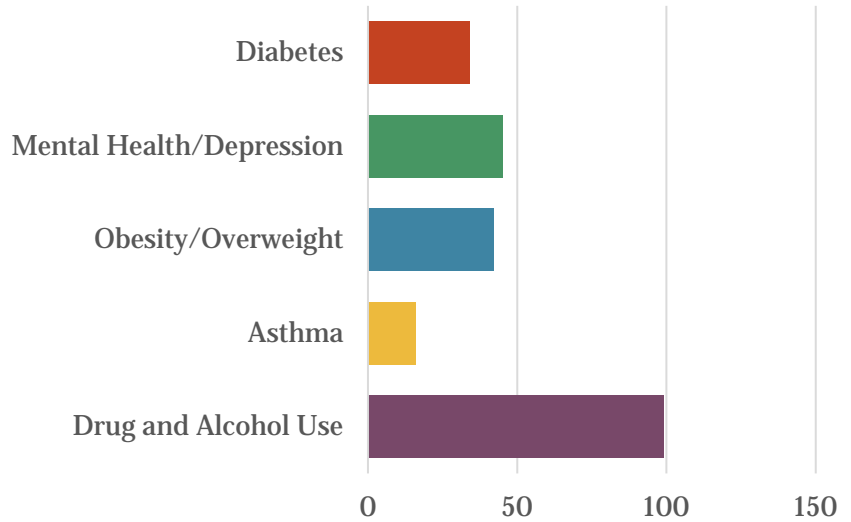
Lastly, below is the link to a power point explaining the project plan template. The “project plan”— due 11/16/17—is a blue print of the work each ACH will undertake. The goal is to demonstrate ACH development and readiness for project planning and implementation. The project plan must explain how projects respond to specific community needs and support sustainable delivery system transformation for Medicaid beneficiaries in the region. I share this with you because it gives an overview of the work to be done in the next few months. [Final Project Plan Template](#)

Charge On!

COMMUNITY ENGAGEMENT

Christal Eshelman, Teresa Davis and volunteer, Amanda Rosales, attended the CVCH Back to School Health Fair in Wenatchee. During this event, they had parents complete a short survey asking “What do you think the biggest health problem is in Wenatchee?” We received over 200 responses with an overwhelming amount of people choosing drug and alcohol use.

What is the biggest health problem in Wenatchee? (n=221; note: 12 survey responses had multiple answers)



POWWOW

September 15th, 10:00 AM – 7:00 PM
Coulee Medical Center, 411 Fortuyn Rd
Grand Coulee, WA 99133

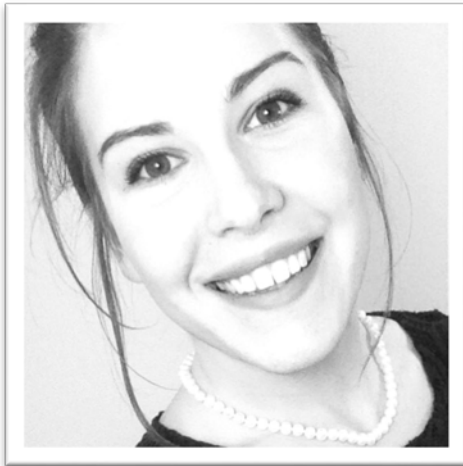


THE NORTH CENTRAL ACCOUNTABLE COMMUNITY OF HEALTH WILL HAVE A BOOTH AT THE UPCOMING ANNUAL GATHERING OF WELLNESS POWWOW AT COULEE MEDICAL CENTER. THIS EVENT IS OPEN TO THE PUBLIC AND IS FREE OF CHARGE.

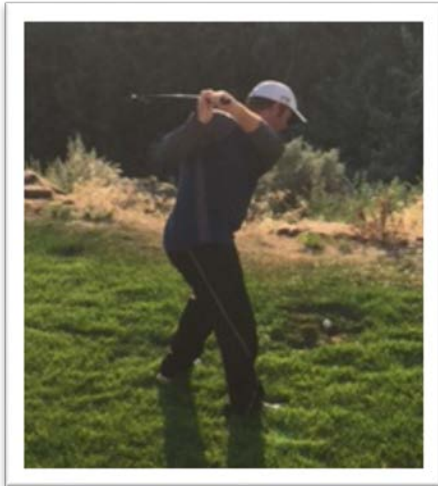
WE HOPE TO SEE YOU THERE!

BOARD SPOTLIGHT

NCACH Welcomes New Board Members



Brooklyn Holton was nominated by the Chelan Douglas Coalition for Health Improvement. Brooklyn works for the City of Wenatchee as the Housing and Community Planner. Brooklyn was instrumental in the creation of the Complete Streets Policy that received a perfect score from the National Complete Streets Coalition. Brooklyn is involved in the Special Olympics of Washington as a coach in various sports. She has also trained for the Team USA Women’s Bobsled Team earning a gold medal and two bronze medals in the North American Cup (NAC) Tour.



Tyler Paris was nominated by NCACH Board Member Theresa Sullivan for the “Consumer Seat”. Tyler brings with him the perspective of being a Medicaid Beneficiary. He has a passion to gain as much knowledge and provide feedback to organizations who provide mental health care and services. We look forward to getting this unique feedback as the NCACH plans projects. Tyler enjoys golfing, fixing and programming computers, snow skiing and hiking.

NCACH Governing Board Members

- Barry Kling – Chair
- Kevin Abel – Vice Chair
- Sheila Chilson – Treasurer
- Winnie Adams – Secretary
- Bruce Buckles
- Kayla Down
- Ray Eickmeyer
- Jesus Hernandez
- Tim Hoekstra
- Brooklyn Holton
- Rick Hourigan
- Molly Morris
- Nancy Nash-Mendez
- Tyler Paris
- Theresa Sullivan
- Senator Judith Warnick
- Doug Wilson

NCACH Staff Update

Christal Eshelman

In addition to the work that you will read about in the FIMC report, I have been busy working on the Pathways Community HUB that the Governing Board selected as one of its six projects from the Medicaid Transformation Demonstration Toolkit. NCACH staff has begun in depth research on the Pathways Community HUB model. Several Washington ACHs have formed an active collaboration for HUB implementation. NCACH is exploring the possibilities of joining this collaborative which could lead to shared learning and potential cost savings. A HUB Workgroup will be formed soon. If you would like more information about the Pathways Community HUB model, background documents have been posted on our website.

Peter Morgan

During the past month I have been working to move forward the agenda of the Whole Person Care Collaborative. I have worked with members of the Steering Committee and ACH staff to edit and revise the documents defining the work of the Collaborative, its charter, membership agreement, and the Provider Process Funding document describing how members can participate in funding for WPCC Change Plans. These documents are being prepared for review and, if possible, approval by the WPCC on September 11. I have also provided some support and consultation to other ACH staff involved in submitting the Phase II certification documents for the HCA which was completed on August 14. Most recently, I received a proposal from the Centre for Collaboration, Motivation, and Innovation to assist NCACH in operating the Whole Person Care Collaborative. I'm now working to evaluate the proposal, check company references, and prepare to present it to the WPCC.

Caroline Tillier

Since joining the NCACH on July 31st, I have been making my way up a steep learning curve as I wrap my brain around the many layers of Washington State's demonstration grant. As our team's data lead, I've been exploring existing data and getting a better understanding of data gaps. As we head into project implementation and planning for the six regional projects we selected, coordinating with the state and other ACHs is important. I'm on point for bi-weekly data calls run by the state's Health Care Authority (HCA) as well as bi-weekly data analytics meetings to create rapid-response reports that can assist with course correction during project implementation. Because each ACH is facing similar data collection and management challenges, I've been reaching out to data leads at other ACHs and there's a definite desire to put our heads together and come up with collective solutions. I plan on being involved in cross-ACH data strategies as they take shape. It's also very important to coordinate with partnering agencies who provide health care in our region and collect data on the ground. Some data needs won't be met by the State, so I've been reaching out to staff responsible for quality reporting. These relationships will be critical for our collective success, and getting their expert input from the start can help us anticipate and mitigate data challenges down the road.

John Schapman

I spent the first two weeks of August finalizing the NCACH Phase II Certification submission that was due to the Health Care Authority on August 14th, 2017. Currently, NCACH has less than three months to submit the Project Plan Application and I am currently developing a timeline for successful completion by November 16th, 2017. Included in this work is assisting in the establishment of NCACH workgroups, ensuring community input is gathered in a timely fashion to impact the project plan application, and reviewing the NCACH staffing needs to fulfill the work of the Demonstration. Finally, I have been working to finalize the new NCACH webpage (ncach.org) which will go live in the next few weeks.

FIMC Update – Christal Eshelman

Fully-Integrated Medicaid Contracting Advisory Committee Report for the North Central Accountable Community of Health Governing Board September 11th, 2017

Preliminary Findings on FIMC from SWWA

The first data analysis that has been released from Southwest Washington by David Mancuso. Additional information on this data will also be released soon. The Research and Data Analysis (RDA) Division of the Department of Social & Health Services has been tracking and compiling data on key measures in order to analyze the effectiveness of integrated managed care on Washington State's Medicaid population. The data covers the first nine months of beneficiary experience under the FIMC model.

The [Preliminary First Year Findings from the Evaluation of Fully Integrated Managed Care in Southwest Washington](#) shows that the region is performing significantly better in 10 measures, no significant difference in 8 measures, and a relative decline in one measure. For the measure that shows negative performance (ED utilization per 1,000 member months), the performance level in Southwest Washington was second-highest among all ACH regions. In other words, Southwest Washington is a high performer in this measure already, which contributes to the data showing a relative decline.

Workgroups

IT/EHR Workgroup: HCA has selected Xpio as the contractor for Technical Assistance and Project Management to work with the Behavioral Health providers to prepare for FIMC. The contract, which starts Sept. 11th, allocates ~150 of TA to each of the 5 providers. Xpio will be using the Qualis IT Assessments as a roadmap and will assist e providers in preparing for EHR changes, data extraction/conversion, billing, and ensuring providers have adequate back up plans in place.

Early Warning System Workgroup: The Early Warning System (EWS) workgroup will be recommending a set of indicators to the Advisory Committee on Sept. 20th. After approval has been made by the Advisory Committee, the final indicators will be recommended to the Governing Board for approval on October 2nd. The HCA AIM team has started collecting baseline data from some partners to prepare for regular data analysis and presentation to the EWS Steering Committee post FIMC.

Consumer Engagement Workgroup: The first client communications is a postcard slated to be sent by HCA on September 1st. The postcard will inform beneficiaries that on Jan. 1, Managed Care Organizations (MCOs) will cover Physical and Behavioral Health services. The next client communications is a letter, scheduled to be sent on Oct. 1, with additional information about MCOs coordinating Behavioral Services.

The Communications Plan outlining key communications strategies and leads has been refined. Most local communications efforts will take place October-December and will focus on informing providers (physicians, care coordinators, front line provider staff, social service agencies, etc.) of the changes that FIMC will bring to the client populations they serve. The following materials will be used for these communications efforts:

- Four simple key messages for beneficiaries rack card
- FIMC 1-pager (primary audience is providers)
- Changes by plan table (tool for providers)

These materials continue to be in draft form.

Upcoming Meetings

Date	Location	Topic
September 20 th 10:00 – 11:30 AM	Confluence Technology Center	Advisory Committee: Early Warning System recommendations
September 20 th 1:00 – 2:30 PM	Chelan-Douglas Health District 2 nd Floor Conference Room	IT/EHR Workgroup

For more information about the FIMC Advisory Committee, contact [Christal Eshelman](#).

NCACH Upcoming Meetings

September	Meeting	Time	Location	City/State
11th	Whole Person Care Collaborative Meeting	11:00 AM - 12:30 PM	Family Health Center	Omak, WA
11th	NC ACH Governing Board Meeting	12:30 PM - 2:30 PM	Family Health Center	Omak, WA
20th	Fully-Integrated Medicaid Contracting Advisory Committee	10:00 AM - 11:30 AM	Confluence Technology Center	Wenatchee, WA
20th	IT/EHR Workgroup	1:00 PM - 2:30 PM	Chelan Douglas Health District	East Wenatchee, WA
21st	Chelan/Douglas Coalition of Health Improvement	3:00 PM - 4:30 PM	Confluence Technology Center	Wenatchee, WA
27th	Okanogan Coalition of Health Improvement	11:00 AM - 1:30 PM	Okanogan Behavioral Health	Okanogan, WA
October	Meeting	Time	Location	City/State
2nd	Whole Person Care Collaborative Meeting	11:00 AM - 12:30 PM	Confluence Technology Center	Wenatchee, WA
2nd	NC ACH Governing Board Meeting	12:30 PM - 2:30 PM	Confluence Technology Center	Wenatchee, WA



North Central Accountable Community of Health

**200 Valley Mall Pkwy
East Wenatchee, WA 98802**

www.ncach.org

Contact for Questions:
Executive Assistant
Teresa Davis
509.886.6432
Teresa.davis@cdhd.wa.gov